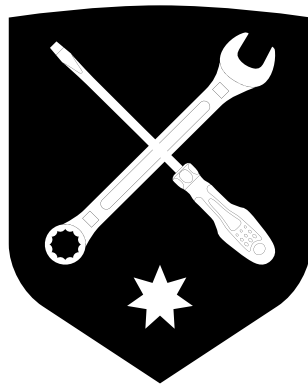


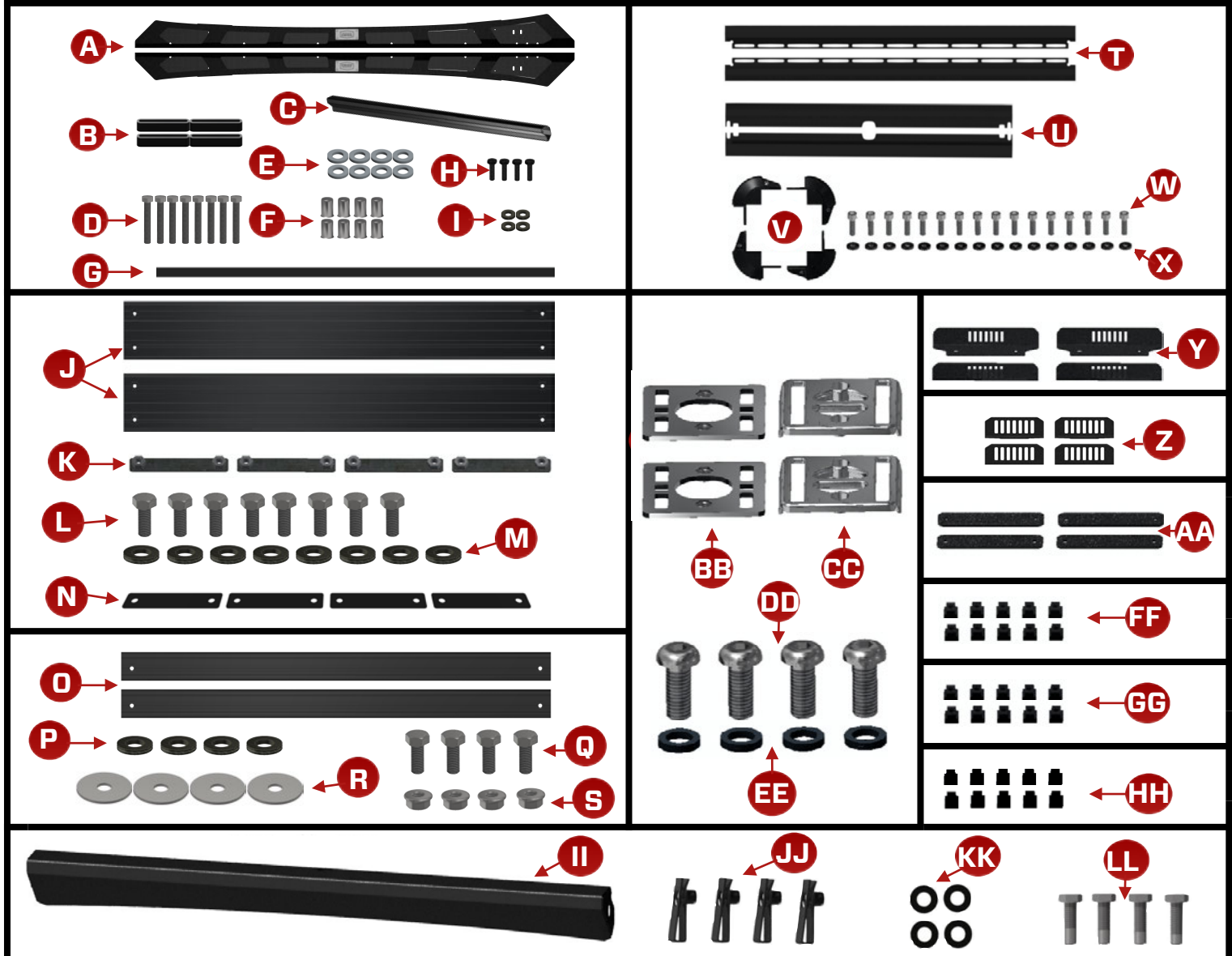


P375-P703-AM2G-UP-UR ROOF RACK

INSTALL INSTRUCTIONS

REVISION D
16 April 2024





REF	QTY	DESCRIPTION	REF	QTY	DESCRIPTION
		MOUNTING RAILS	U	2	Frame Rail (Front + Rear)
A	2	Mounting Rails (Left + Right)	V	4	Frame Corner
B	4	Mounting Block	W	16	M6 x 20mm H5 Socket Cap Head CL70 Screw (SS316)
C	1	ROOF RACK (Stealth Air-Dam)	X	16	M6 Wedge-Lock Extended Washer (SS316)(BLACK)
D	12	M8 x 50mm Bolt Hex Head 10.9 Zinc			ROOF RACK (4x Plank End-Caps)
E	12	M8 Wedge-Lock Washer Zinc	Y	4	Plank End-Cap (Slotted)
F	12	M8 Nutsert Stainless Steel			ROOF RACK (4x Half Plank End-Caps)
G	1	Butyl Rubber Seal Tape	Z	4	Half Plank End-Cap (Slotted)
H	4	M6 x 20mm Hex Head CL70 Bolt (SS316) (BLACK)			ROOF RACK (Roof Top Tent KIT)
I	4	M6 Wedge-Lock Extended Washer (SS316)(BLACK)	AA	2	Roof Top Tent Bracket
-	1	4g Anti-Sieze Pouch			ROOF RACK (2x Tie-Down Plates)
-	1	Chief Product Shop Rag	BB	2	Tie-Down (Bottom Plate)
		ROOF RACK (2x Planks) [1146mm]	CC	2	Tie-Down (Top)
J	2	Plank	DD	4	M8 x 20mm H5 Socket Button Head Screw (SS316)
K	4	M8 Fastening Plate	EE	4	M8 Wedge-Lock Washer (SS316)
L	8	M8 x 20mm Hex Head CL70 Bolt (SS316)			ROOF RACK (10x T-Nuts)
M	8	M8 Wedge-Lock Extended Washer (SS316)(BLACK)	FF	10	M6 T-Nut 10.9 (Black)
N	4	Rubber Isolater Strip	GG	10	M8 T-Nut 10.9 (Black)
		ROOF RACK (2x Half Planks) [1146mm]	HH	10	M10 T-Nut 10.9 (Black)
O	2	Plank			ROOF RACK (P375, P703, AM2G, UP, UR - AERO)
P	4	M8 Wedge-Lock Extended Washer (SS316)(BLACK)	II	1	ROOF RACK (Premium Air-Dam)
Q	4	M8 x 25mm Hex Head CL70 Bolt (SS316)	JJ	4	M6 Speed Nut (J nut)
R	4	M8 x 32mm Washer (SS316)	KK	4	M6 Wedge-Lock Extended Washer (SS316)(BLACK)
S	4	M8 Flange Nut	LL	4	M6 x 20mm Hex Head CL70 Bolt (SS316)(BLACK)
		ROOF RACK (Platform Frame) [6 Plank]			
T	2	Frame Rail (Left + Right)			



REQUIRED TOOLS

Socket Wrench	3/4mm Drill Bit
13mm Socket	Masking Tape
10mm Socket	Torque Wrench
100mm Socket Wrench Extension	Tape Measure
13mm Spanner	Pencil
Power Drill	Centric Punch
11.5mm Drill Bit	Hammer

NOTES

- DO NOT OVER-TIGHTEN FASTENERS.
- LEFT & RIGHT SIDES ARE DEFINED FROM THE DRIVERS POSITION.
- PHOTOS ARE REPRESENTATIVE ONLY. Photos may show prototype parts, may be taken from multiple vehicles, and may be different than your vehicle. Due to global vehicle variances, model year changes and differing model options (engine, options, etc.) it is impossible to provide photos that are 100% accurate for all customers.

IMPORTANT

- PROPER INSTALLATION IS ESSENTIAL TO THE PERFORMANCE OF THIS PRODUCT.
- ONLY INSTALL THIS PRODUCT ON A 2011-2021 FORD RANGER (ALL VEHICLES THAT USE THIS RACK).
- ONLY USE THE PROVIDED HARDWARE FOR INSTALLATION.
- DO NOT MODIFY THE STRUCTURE OF THIS PRODUCT IN ANY WAY.
- CHECK PRODUCT REGULARLY FOR DAMAGE. REPLACE IMMEDIATELY AT FIRST SIGN OF DAMAGE.
- CHECK FASTENER TIGHTNESS REGULARLY AND TIGHTEN IF REQUIRED.
- P375 ROOF RACK DELIVERS INDEPENDENTLY TESTED LOAD RATINGS OF 150KG (Dynamic) & 600KG (Static). Testing results are certified to comply with Australian Standard (AS 1235-2000) as well as international standards (ISO / PAS 11154 : 2009:2006) and (DIN 75302/02: 1991).
- FOR MAXIMUM SAFETY DO NOT EXCEED MANUFACTURERS ROOF WEIGHT LIMITS. Our load ratings represent the maximum mechanical forces our roof rack system can withstand before failure. Our load ratings do not address vehicle safety during high-speed manoeuvres, or changes to vehicle dynamics caused by a higher centre of gravity.
- FOR MAXIMUM SAFETY, LOADS SHOULD BE EVENLY DISTRIBUTED AND PROPERLY SECURED TO AVOID SHIFTING DURING TRANSPORT. Before using your roof rack, it is important to familiarise yourself with the proper load securing techniques and be constantly safety oriented. Please note, all of our load ratings are based on an evenly distributed load.

1

Prepare ALL PARTS & COMPONENTS

1. Layout all parts and components to ensure that they are all present and correct.
2. Ensure that you have identified both the LHS & RHS side rails. This is Important when ensuring the correct fitment to the roof rack.



2

Prepare Ford Ranger

1. There are two options for dealing with the weather strip on the roof.
 1. Measure the points to where the mounting blocks will sit and cut portions of the weather strip.
 2. Remove all roof hardware and weather strips that are currently on the vehicle and clean all areas thoroughly.

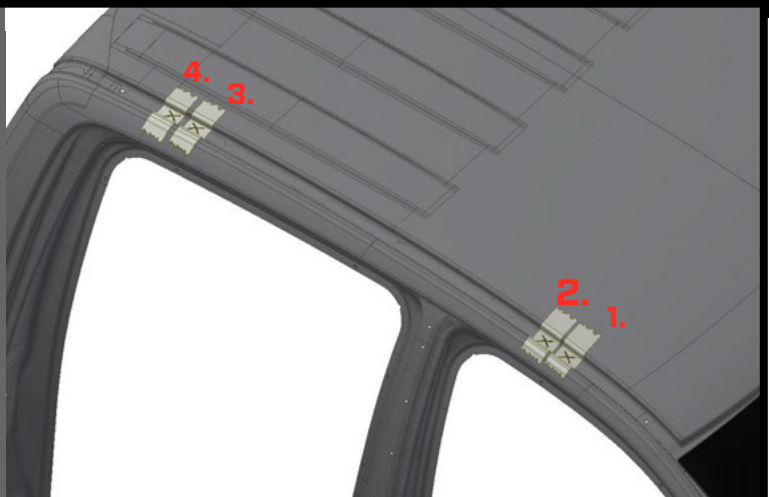
Go to Tips and Tricks (page 14) for help with steps 2-8



3

Prepare Ford Ranger 2

1. Place wide runs of masking tape n the approximate area of the four fixing points on both sides of the vehicle.
2. All measurements are taken from the top edge of the windscreen glass and run backwards along the vehicle.
3. Mark drill points 1, 3 & 4 in the centre of the gutter. Point 2 should be marked 3mm outboard from the centre of the gutter.



4

Prepare Ford Ranger 3

1. Make sure to properly protect your vehicle before continuing. Best practice is placing down towels by the weather strips and taping them down as shown in the image.



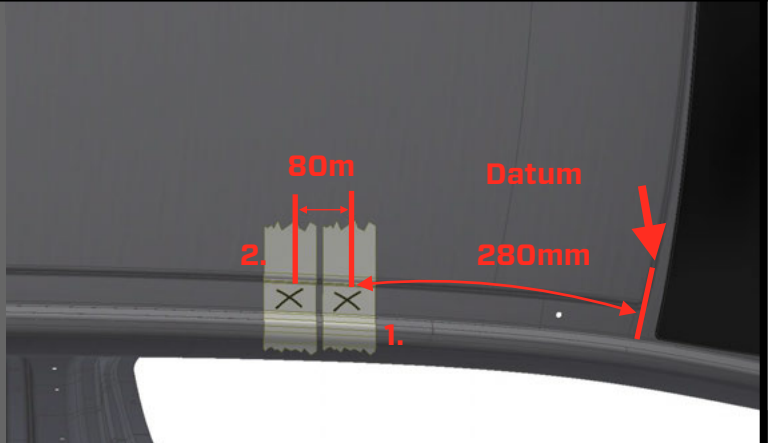
5

Prepare FIXATION 'Front'

1. Measuring from the metal lip above the windshield, measure along the roof gutter 280mm to the first hole and mark on the top, then 80mm from the first mark.

NOTE:

For best fit, when marking the points to drill, ensure that mark 2 on this step is approximately 3mm outboard from the centre of the groove.



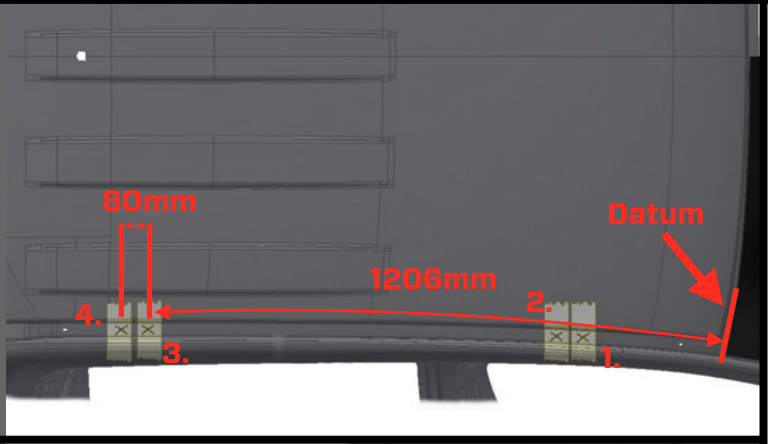
6

Prepare FIXATION 'Rear'

1. Measuring from the metal lip above the windshield, measure along the roof gutter 1206mm to the first hole and mark on the top, then 80mm from the first mark.

NOTE

Ensure that all fixation locations are marked in the centre of the roof gutter. All dimensions are common on both the RHS and LHS of the vehicle.



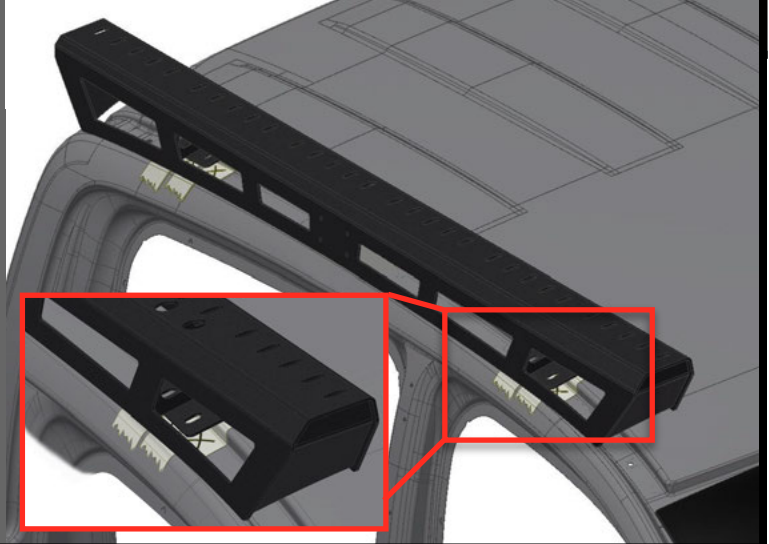
7

Prepare FIXATION Locations

1. Once locations have been marked, offer up both Mounting Rails [A] sides onto the vehicle.
2. Using the front fixation marks as a datum, verify that all marked locations on the vehicle align with the fixation slots on the Mounting Rails [A].

NOTE

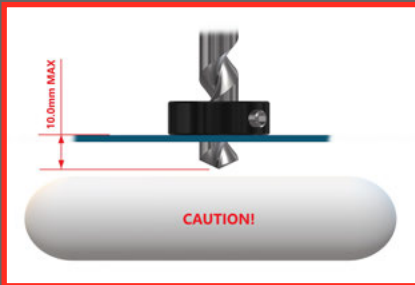
If required, adjust marked locations to match the slots in the mounting rails so its best centred.



8

Prepare FIXATION Locations 2

1. Centre punch & drill at all 8 marked fixation locations with an 3mm drill bit to create pilot holes.
2. Switch to a 11.5mm drill bit and drill out all of the marked locations
3. Clean up all holes and remove any burrs.
4. Using the supplied M8 Nutserts [F] drop into the 8 drilled holes and secure in-place using a Rivet Nut Gun.



NOTE:

To avoid any damage to the interior of the channels it is *strongly* advised create a drill stop for the 11.5mm drill bit as shown. Go to page 14 for tips and tricks for dealing with the roof.



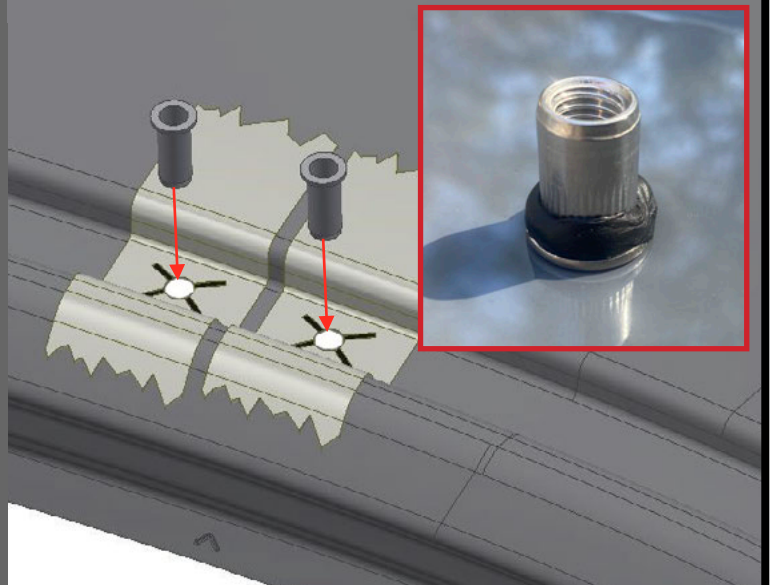
9

Prepare FIXATION Locations 2

1. Place a generous amount of butyl tape [G] around the Nutserts [F].
2. Using the supplied M8 Nutserts [F] drop into the 8 drilled holes and secure in-place using a Rivet Nut Gun.

NOTE:

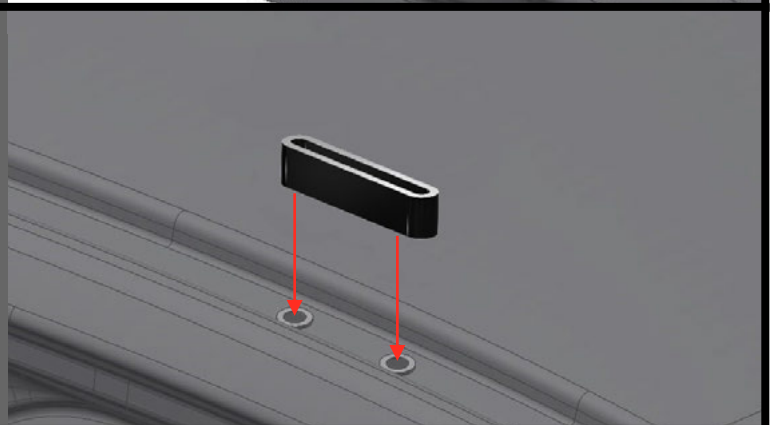
It is *strongly* advised to add a rust inhibitor to all drilled holes prior to the rivets being installed.



10

Attach MOUNTING RAILS

1. Over each M8 Nutsert [F] locations, place a mounting block [B].



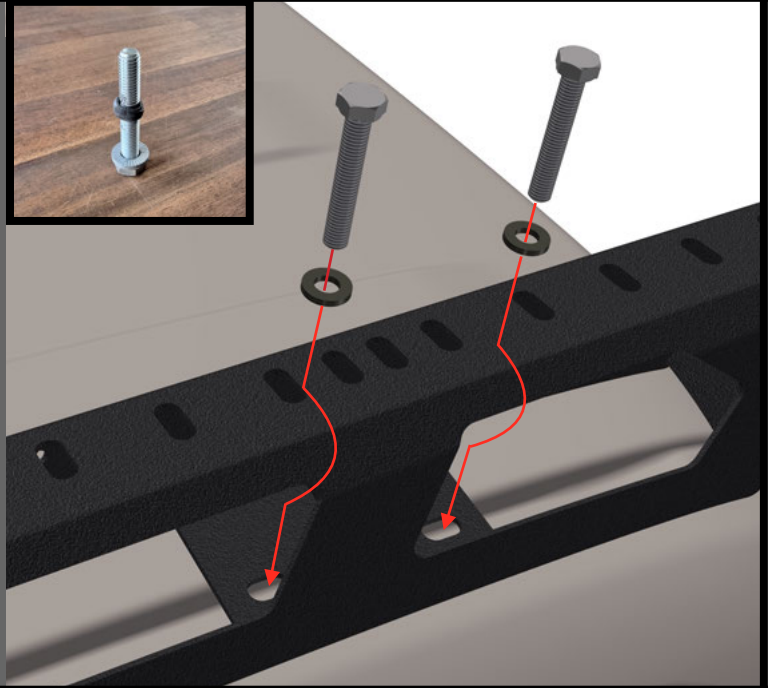
11

Attach MOUNTING RAILS 2

1. Place Mounting Rails [A] over the in-place Mounting Blocks [B]. Using 8x M8 x 50mm Hex Head Bolt [D] & M8 Wedge-Lock Washer [E] combination drop through each access hole on the top face of the Rails.
2. On all created bolt and washer combos place some butyl rubber sealing tape [G] around the bottom third of the bolt (top left photo).
3. Tighten left and right hand Mounting Rail bolts finger tight.

NOTE:

Make sure to put the washer on the bolt before applying the butyl tape.



IF YOU'RE INSTALLING:

- STEALTH AIR-DAM (Go to step 12)
- PREMIUM AIR-DAM (Go to step 13)

12

Attach STEALTH AIR DAM

1. Place the Stealth Air Dam [C] in the rear position between the two Mounting Rails for the quietest set up.
2. Assemble all the bolt combo's using (4) of M6 x 20mm Hex Head CL70 Bolt [H], M6 Wedge-Lock Extended Washer [I].
3. Attach (2) bolts to each side on the Stealth Air Dam [C].
4. Tighten all (8) bolts to "Finger Tight"

NOTE:

There are two positions to place the extruded Stealth Air dam, it is recommended that you position the Stealth Air dam in the rear most option for the quietest setup.



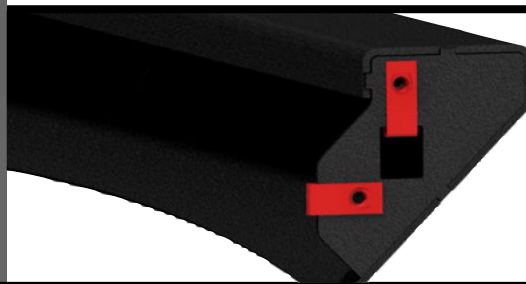
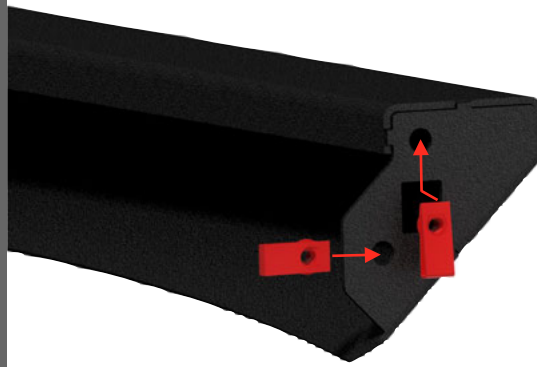
STEALTH AIR-DAM:

- Once the Stealth Air-Dam has been installed go to step 15.

13

Assemble PREMIUM AIR DAM

1. Attach (2) J-Nuts [JJ] to each side of the Premium Air-Dam.



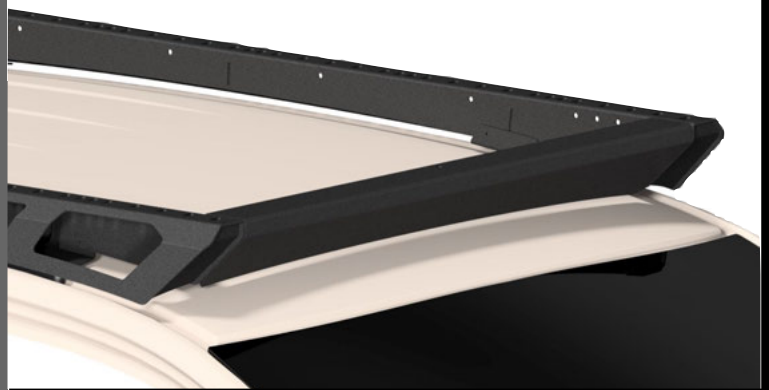
NOTE:

Bottom image is reference to what each side should look like when assembled.

14

Attach PREMIUM AIR DAM

1. Place the Premium Air Dam [II] in line with the two Mounting Rails [A].
2. Assemble all the bolt combo's using (4) of M6 x 20mm Hex Head CL70 Bolt [LL], M6 Wedge-Lock Extended Washer [KK].
3. Attach (2) bolts to each side on the Premium Air Dam [II].
4. Tighten all (8) bolts to "Finger Tight"



15

Position planks

1. Place (1) Plank [J] towards the front of the mounting rails. SEE NOTE.
2. Place (1) Plank [J] towards the rear of the mounting rails. SEE NOTE.

NOTE

We will be removing these planks, this is just to help with the mounting rails install.



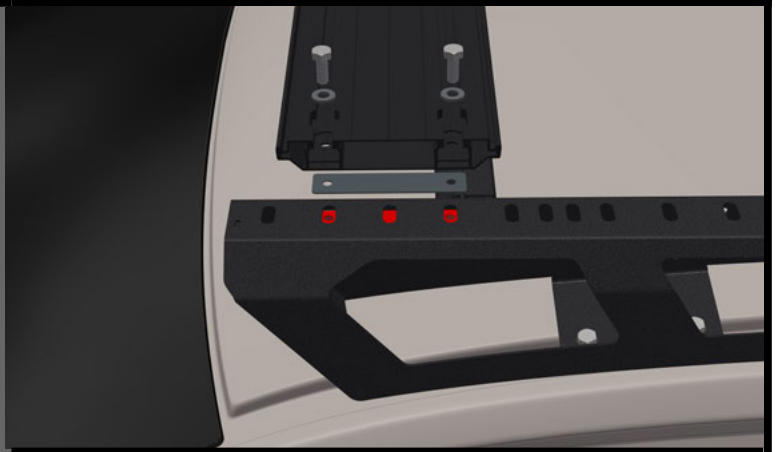
16

Attach 2 PLANKS

1. Create (4) Bolt & Washer Combos, by adding (1) M8 Wedge-Lock Extended Washer [M] to (1) M8 x 20mm Hex Head Bolt [L].
2. Using (2) Bolt & Washer Combos and (1) M8 Fastening Plate [K] secure the end of each Plank [J]. Place M8 Fastening Plate [K] on underside of top face of Mounting Rail [A] (bottom photo - M8 Fastening Plate in red).
3. Do this for the end of each Plank [J].

NOTE

We will be removing these planks, this is just to help with the mounting rails install.



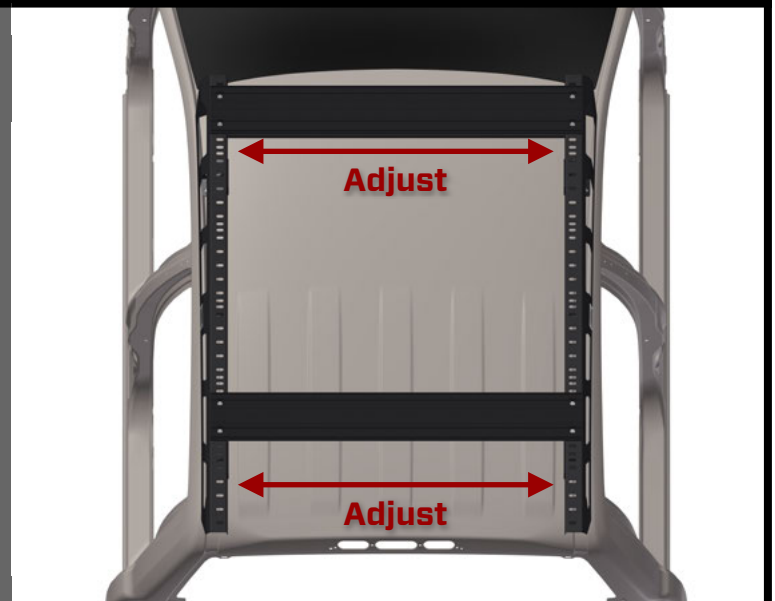
17

Align MOUNTING RAILS.

1. Align as close as practical to the centre of the Channel roof strip for the FRONT and REAR of the Mounting Rails [A].
2. Ensure the Planks [J] and Mounting Rails [A] are centred on the roof of the vehicle.
3. Tighten (2) M8 Bolts at each end of the Planks [J].

NOTE

Recommended M8 Bolt Torque = 23Nm (Dry) or 18Nm (Anti-Seize).



18

Finalize ALL ATTACHMENTS

1. Tighten Stealth Air dam M6 x 20mm Bolt Button Head to 14Nm (Dry) or 11Nm (Anti-Seize).
2. Fasten the x8 M8 x 50mm Hex Head Bolts [D] can be achieved through the access holes on the top face of the Mounting Rails [A] as well as the side apertures. Torque bolts to 23 Nm (DRY) or 18Nm (Anti-Seize).

NOTE

Recommended M8 Bolt Torque = 23Nm (Dry) or 18Nm (Anti-Seize).



19

Remove attached PLANKS

1. Remove the Bolt [L] and washer [M] combo's from each end of the attached planks [J] (Keep these to one side, you will need them later).
2. Remove both planks [J] from the mounting rails [A]

NOTE

Keeping the bolt combo's with the planks will make it easier when properly installing the planks.



IF YOU HAVE:

- APEX ROOF RACK SYSTEM (Go To Step 20).
- SAFARI EDITION, OVERLAND EDITION, ROOF TOP TENT EDITION or BARE BONES EDITION (Go To Step 25).

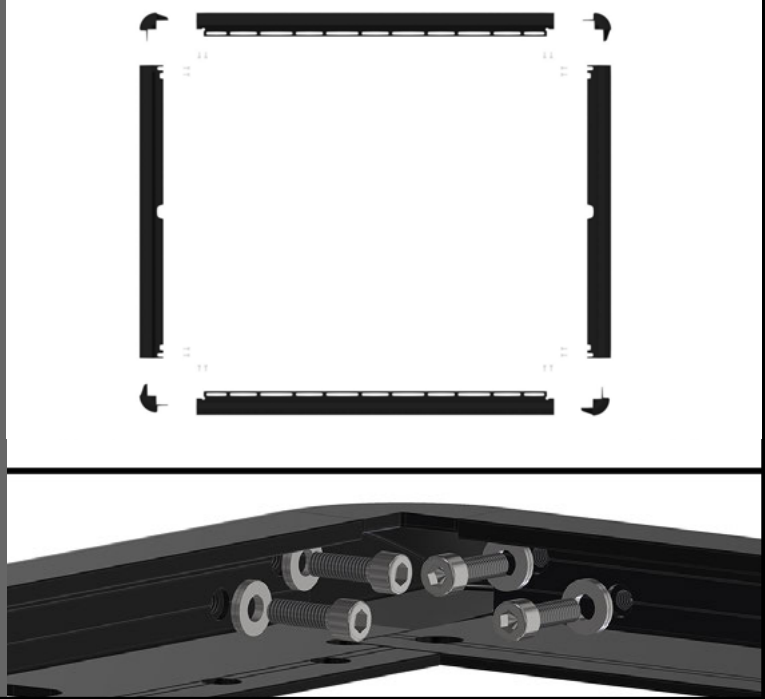
20

Prepare PLATFORM FRAME.

1. Place (2) Frame Rail (Front + Rear) [U], (2) Frame Rail (Left + Right) [T] and (4) Frame Corner [V] in position (top photo).
2. Install (1) Frame Corner [V] into each end of each Frame Rail (Front + Rear) [U].
3. Create (16) Screw & Washer Combos, by adding (1) M6 Wedge-Lock Extended Washer [X] to (1) M6 x 20mm H5 Socket Cap Head Screw [W].
4. Insert (2) Bolt & Washer Combo through inner face of Frame Rail (Left + Right) [T] and loosely tighten into Frame Corner [V]. Do this for each Frame Corner [V].

NOTE

Place parts on blanket to avoid scratches during installation.



21

Prepare PLATFORM FRAME.

1. Place Platform Frame on Mounting Rails [A]. Align rear edge of Platform Frame with rear edge of Mounting Rails [A], (red arrow bottom photo).
2. Tighten fasteners for each Frame Corner [V].

NOTE

Recommended M6 Bolt Torque = 14Nm (Dry) or 11Nm (Anti-Seize).



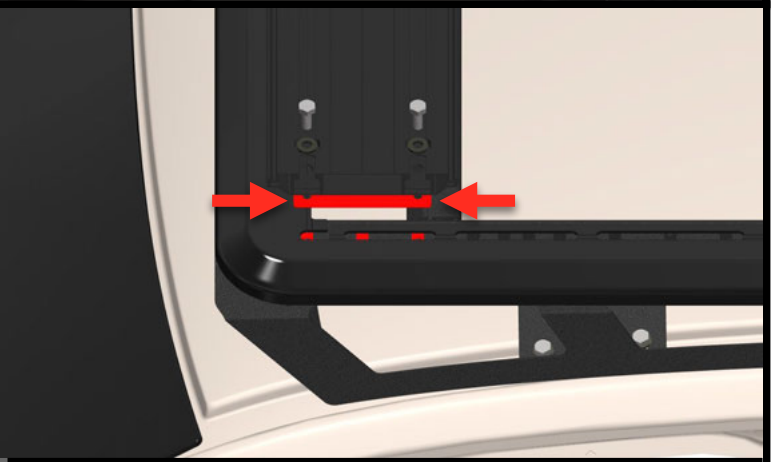
22

Install PLANKS.

1. Create (8) Bolt & Washer Combos, by adding (1) M8 Wedge-Lock Extended Washer [M] to (1) M8 x 20mm Hex Head Bolt [L].
2. Using (2) Bolt & Washer Combos and (1) M8 Fastening Plate [K] secure the end of each Plank [J]. Place M8 Fastening Plate [K] on underside of top face of Mounting Rail [A] (bottom photo - M8 Fastening Plate in red). Insert each Bolt & Washer Combo through Plank [J], through (1) Rubber Isolator Strip [N] (top photo - red arrows), through Platform Frame, through Mounting Rail [A] and into M8 Fastening Plate [K] (bottom photo). Loosely tighten.
3. Do this for the end of each Plank [J].

NOTE

Ensure the front lip of your Plank tucks into the Platform Frame. You may need to angle the Plank slightly so the front lip of the Plank slips under the top face of the Frame.



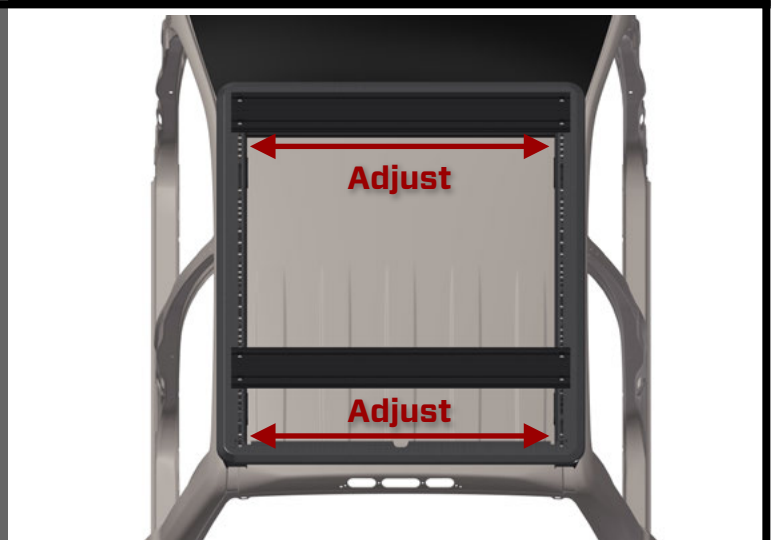
23

Align PLATFORM FRAME.

1. Align as close as practical to the centre of the car for the FRONT and REAR of the Mounting Rails [A].
2. Ensure the Platform Frame, Planks [J] and Mounting Rails [A] are centred on the roof of the vehicle.
3. Tighten (2) M8 Bolts at each end of the Planks [J].

NOTE

Recommended M8 Bolt Torque = 23Nm (Dry) or 18Nm (Anti-Seize).



24

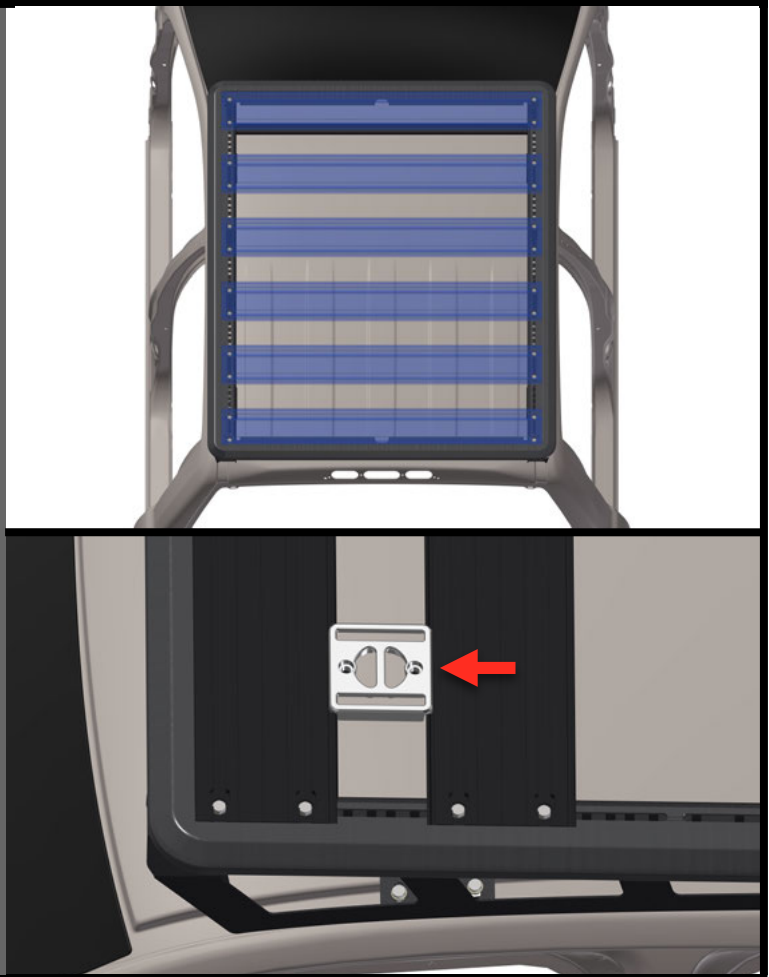
Install PLANKS.

* You can now install your Planks in whatever configuration best meets your needs.

1. Create (4) Bolt & Washer Combos, by adding (1) M8 Wedge-Lock Extended Washer [M] to (1) M8 x 20mm Hex Head Bolt [L].
2. Using (2) Bolt & Washer Combos and (1) M8 Fastening Plate [K] secure the end of each Plank [J]. Place M8 Fastening Plate [K] on underside of top face of Mounting Rail [A]. Insert each Bolt & Washer Combo through Plank [J], through Rubber Isolator Strip [J], through Platform Frame, through Mounting Rail [A] and into M8 Fastening Plate [K] (See Photos from Step 12).
3. Repeat 20.1 and 20.2 for each Plank [J].
4. Tighten all fasteners.

NOTES

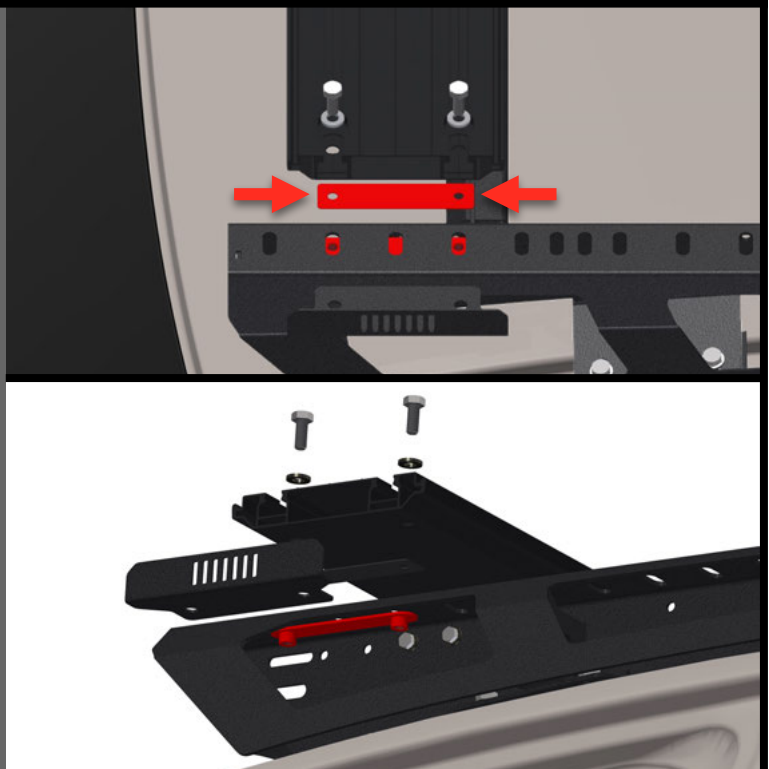
Recommended M8 Bolt Torque = 23Nm (Dry) or 18Nm (Anti-Seize).
If you're installing Tie-Down Plates, you can use a Tie-Down (Top) [CC] to ensure perfect spacing between each Plank (BOTTOM PHOTO).



25

Install PLANKS.

1. Create (8) Bolt & Washer Combos, by adding (1) M8 Wedge-Lock Extended Washer [M] to (1) M8 x 20mm Hex Head Bolt [L].
2. Using (2) Bolt & Washer Combos and (1) M8 Fastening Plate [K] secure the end of each Plank [J]. Place M8 Fastening Plate [K] on underside of top face of Mounting Rail [A] (bottom photo - M8 Fastening Plate in red). Insert each Bolt & Washer Combo through Plank [J], through (1) Rubber Isolator Strip [N] (red arrows), through End Cap [Y], through Mounting Rail [A] and into M8 Fastening Plate [K] (top photo). Loosely tighten.
3. Do this for the end of each Plank [J].



26

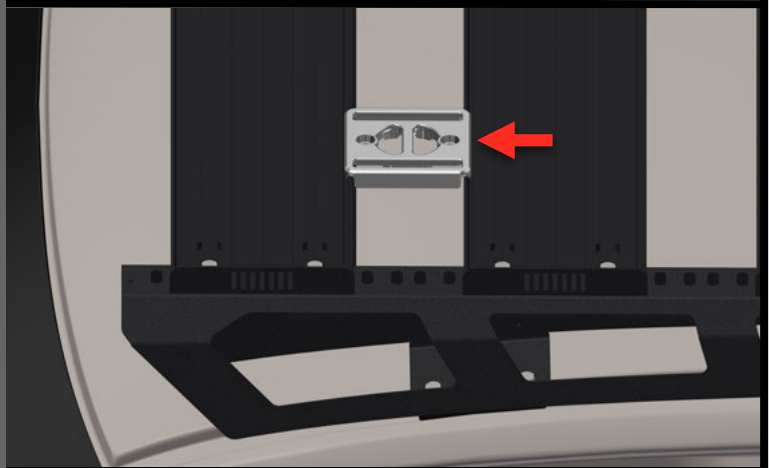
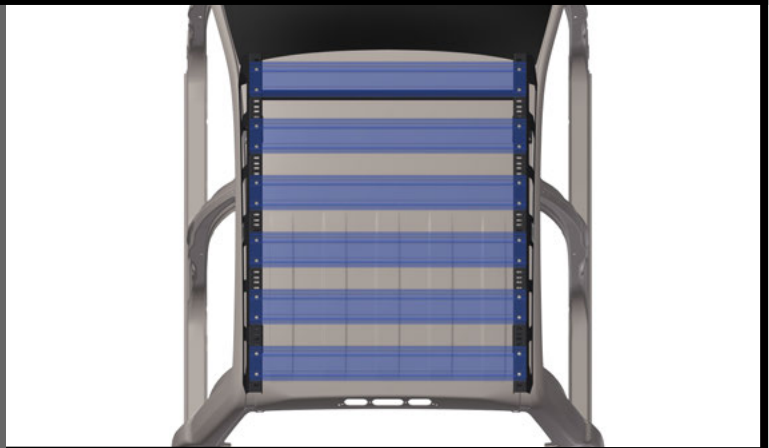
Install PLANKS.

* *You can now install your Planks in whatever configuration best meets your needs.*

1. Create (4) Bolt & Washer Combos, by adding (1) M8 Wedge-Lock Extended Washer [M] to (1) M8 x 20mm Hex Head Bolt [L].
2. Using (2) Bolt & Washer Combos and (1) M8 Fastening Plate [K] secure the end of each Plank [J]. Place M8 Fastening Plate [K] on underside of top face of Mounting Rail [A]. Insert each Bolt & Washer Combo through Plank [J], through End Cap [Y], through Rubber Isolator Strip [N], through Platform Frame, through Mounting Rail [A] and into M8 Fastening Plate [K] (See Photos from Step 23).
3. Repeat 23.1 and 23.2 for each Plank [J].
4. Tighten all fasteners.

NOTES

Recommended M8 Bolt Torque = 23Nm (Dry) or 18Nm (Anti-Seize).
If you're installing Tie-Down Plates, you can use a Tie-Down (Top) [CC] to ensure perfect spacing between each Plank (BOTTOM PHOTO).



FORD RANGER ROOF RACK is now fully installed.

IF YOU'RE INSTALLING:

- HALF PLANKS (Go To Page 13)
- TIE-DOWN PLATES (Go To Page 14).
- ROOF TOP TENT KIT (Go To Page 15).
- T-NUTS (Go To Page 15).

NOTE

Specified vehicle is not shown in steps; accessory installation is the same process with all Chief Racks.

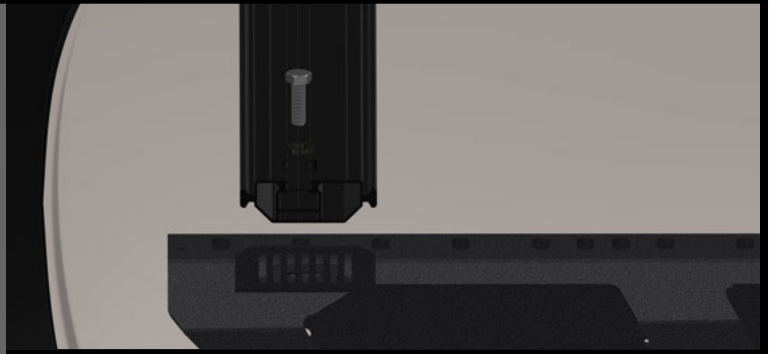
HALF PLANK KIT

[START]

1

Install HALF-PLANKS

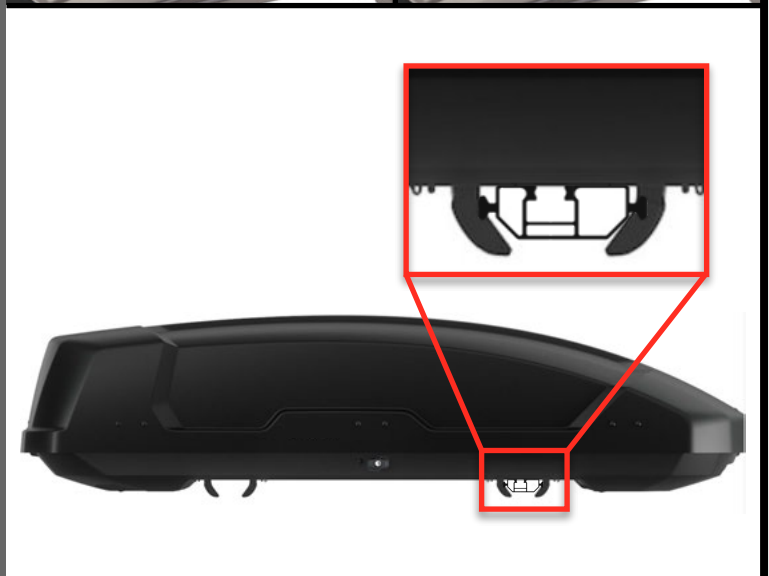
1. Create (2) Bolt & Washer Combos, by adding (1) M8 Wedge-Lock Extended Washer [P] to (1) M8 x 20mm Hex Head Bolt [Q].
2. Using (1) Bolt & Washer Combos and (1) M8 Flange Nut (highlighted red)[S] secure the end of each Plank [O]. Place M8 Flange Nut [S] beneath the M8 x 32mm Washer [R] on the underside of top face of Mounting Rail [A] (bottom photo). Insert each Bolt & Washer Combo through Plank [J], through End Cap [Z], through Mounting Rail [A], through M8 x 32mm Washer [R] (red arrow) and into M8 Flange Nut [S]. Loosely tighten.
3. Do this for the end of each Plank [O].



2

Half Plank uses

1. Half Planks can be assembled together to function the same as Full Planks or separate to use with accessories that clamp around more standard roof bars.
2. Compatible with all other Chief Products attachment accessories.



HALF PLANK KIT

[END]

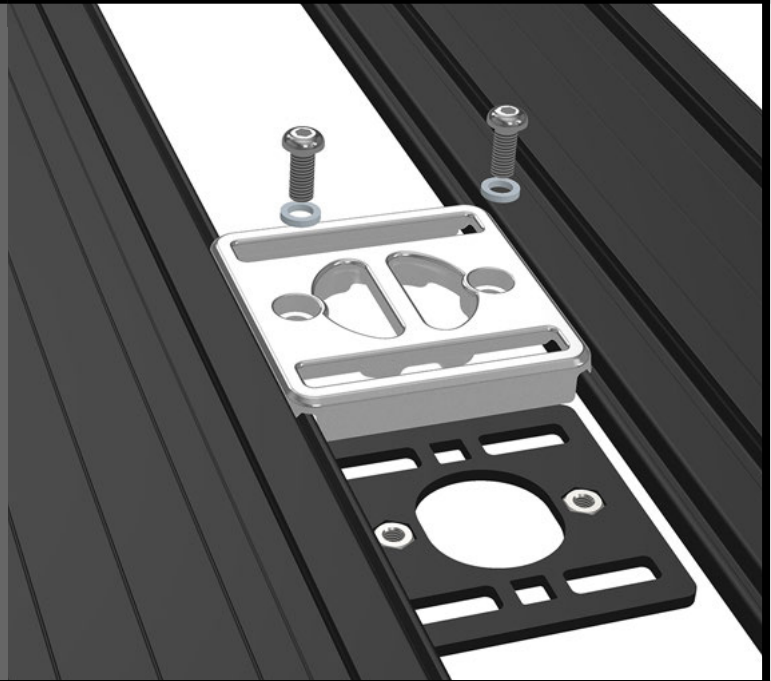
TIE-DOWN PLATES

[START]

1 TIE-DOWN PLATES

Install TIE-DOWN PLATE.

1. Install Tie-Down (Top) [V] so the edges hook over the edges of the Planks [J] (See Photo).
2. Position Tie-Down (Bottom Plate) [U] under Tie-Down (Top) [V] with flush face facing upwards.
3. If installing T-Nuts [Z, AA & BB] into Tie-Down Plate, see Step 2 now.
4. Create (2) Bolt & Washer Combos, by adding (1) M8 Wedge-Lock Extended Washer [X] to (1) M8 x 20mm H5 Socket Button Head Screw [W].
5. Secure Tie-Down Plate to Planks [J] by inserting Bolt & Washer Combo through Tie-Down (Top) [V] and into Tie-Down (Bottom Plate) [U].
6. Position Tie-Down Plate in desired location. Tighten fasteners.



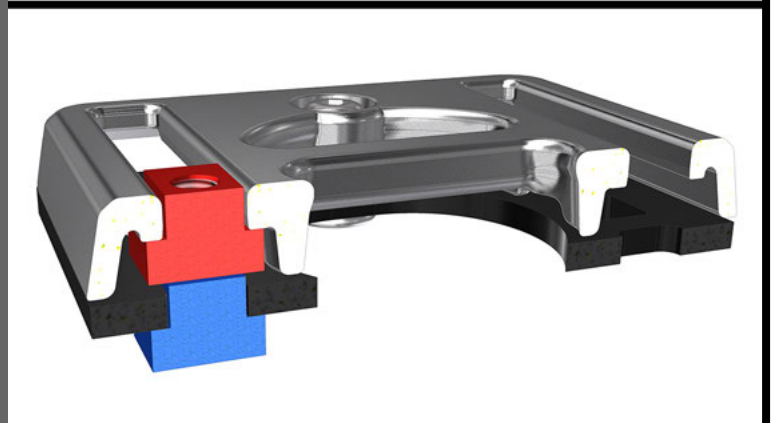
2 TIE-DOWN PLATES

Install T-NUTS.

1. Choose T-Nut location for intended use.
 - Upper position will capture T-Nut [Z, AA & BB] within the adjustment slot and is suitable for most fastening requirements, (red in photo).
 - Lower position (below Bottom Plate) is not captive but is available for Heavy Duty applications (large spare tyre), (blue in photo).
2. If using Upper Position, position T-Nut [Z, AA & BB] into adjustment slot, between Tie-Down (Top) [V] and Tie-Down (Bottom Plate) [U]. Tighten Tie-Down Plate fasteners. T-Nut can slide in adjustment slot, but cannot fall out.
3. If using Lower Position, hold T-Nut [Z, AA & BB] below Tie-Down (Bottom Plate) [U] of a fully installed Tie-Down Plate. Insert Bolt through Tie-Down Plate adjustment slot and into T-Nut.

NOTE

Only install T-Nuts when they are going to be used, otherwise they will move and make noise.



TIE-DOWN PLATES

[END]

ROOF TOP TENT KIT [START]

1 ROOF TOP TENT KIT

Position PLANKS.

1. Position each Plank (front & rear) to best suit your Roof Top Tent Manufacturers Recommendations.

NOTE

It is recommended that you position your Planks as far apart as possible for maximum support of your roof top tent.



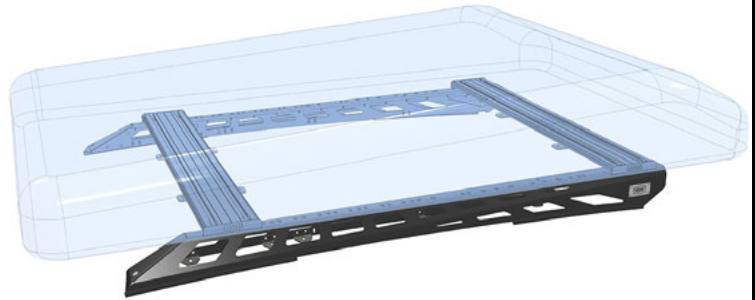
2 ROOF TOP TENT KIT

Install BRACKETS.

1. Position (1) Roof Top Tent Bracket [Y] underneath your Plank [G] at each corner of your Roof Top Tent.
2. Insert the fasteners from your Roof Top Tent down through each Roof Top Tent Bracket [Y] and tighten finger tight. Once all (4) are installed, tighten the fasteners at each corner.

!!IMPORTANT!

If you have a sunroof, ensure your fasteners do not extend more than 20mm below the Roof Top Tent Brackets. If they do, they could cause interference when opening the sun roof.



ROOF TOP TENT KIT [END]

T-NUTS [START]

1 T-NUTS

Using T-NUTS.

1. When using T-Nuts with a Plank [J], drop them into one of the (2) square holes at the end of each Plank. Slide T-Nut in the track to the desired position.
2. When using T-Nuts with a Tie-Down Plate, see Step 2 of Tie-Down Plate instructions (above).

NOTE

Only install T-Nuts when they are going to be used, otherwise they will move and make noise. T-Nuts are Grade 10.9 for maximum strength.



T-NUTS [END]

TIPS AND TRICKS

1 TIPS AND TRICKS

Removing portions of the weather strips

1. Measure and mark all of the dimensions from steps 5 and 6. Using the mounting feet you can measure and mark the area that needs to be removed. Make sure to protect the vehicle with towels and tape as necessary.
2. Once all measurements have been marked and a check has been made making sure that the mounting rails will fit nicely, lift the weather strip using a plastic separator tool.
3. In the centre of the weather strip should be a metal core. Using a set of cutters, cut through the weather strip. The separator tool will make this easier to avoid damaging the vehicle.
4. Once the core has been cut you can go back with a utility knife to cut out the marked area, using the cutters to cut through the metal core.



1 TIPS AND TRICKS

Drilling into the roof of your vehicle

1. Trace the interior of the mount block onto the roof of the car and mark the points that you are going to drill.
2. Use a punch tool to create a centre punch for the drill.
3. Using a 3/4mm drill bit, drill a pilot hole for the larger drill bit. Using a vacuum here will avoid any metal shavings created while drilling.
4. Create a drill stop on the 11.5mm drill bit as you do not want to damage internal parts of the vehicle.

NOTE

When drilling the front most holes there is a chance you will run into a sheet of metal in the channel. To avoid this try and drill closer to the wall of the channel (3mm) or use a punch after the fact to bend out of the way.



TROUBLESHOOTING

[START]

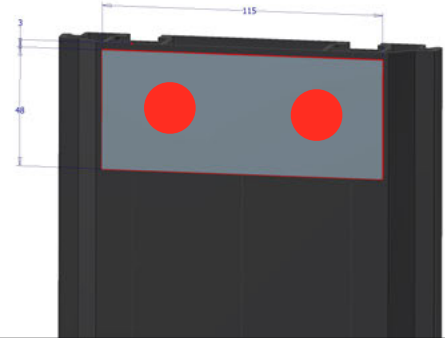
1 TROUBLESHOOTING

NOISE → VIBRATIONS (HUMMING SOUND 50-80kph)

1. Check that all Rubber Isolator Strip [N] have been installed properly. They should be positioned between Plank [J] and Platform Frame or End Cap [T].
2. If vibration persists; loosen (without removing) all fasteners retaining Planks [J] and Mounting Rails [A]. Tighten fasteners securing Mounting Rails [A], then tighten fasteners securing Planks [J].

NOTE

Mounting items on your rack will eliminate Plank vibrations.



1 TROUBLESHOOTING

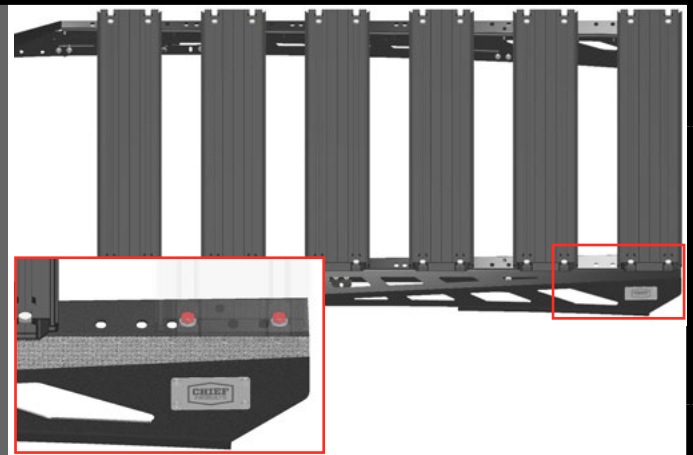
NOISE → WIND (WHISTLING)

1. Check that all End-Caps [T] have been installed properly (Step 23). Open ended Planks can cause whistling noise.

1 TROUBLESHOOTING

SAFARI EDITION NOISE

1. Mounting the planks in the furthest back position while keeping standard plank spacing is the quietest setup for Safari edition users that encounter whistling.





TROUBLESHOOTING

[END]

MAINTENANCE

FASTENERS

- Check fastener tightness regularly and tighten if required. We recommend checking fasteners after every large off-road trip.

CORROSION PROTECTION

- After an off-road trip; rinse all mud, sand or debris off the product.
- After driving in salt water; rinse product thoroughly with fresh water.

EXTRA CARE

- If you're planning to drive in a salty environment; spray fasteners with WD40 or an equivalent.
- If you're planning to drive in a salty environment; spray product with Lanolin or an equivalent.
- Spray deep scratches (before they rust) with touch up paint to help inhibit corrosion.

SUPPORT

Find answers online.

www.chiefproducts.com.au/pages/support

Having troubles? Make sure you've downloaded the most recent version of these instructions from our website. We occasionally make updates.

www.chiefproducts.com.au/installation/p375-p703-am2g-up-ur-roof-rack.pdf

If you need additional help, send us an email.

support@chiefproducts.com.au

SHARE

Looking to share epic photos of your WK2?

Send us your photos - Unboxing, Fully Installed, Painted-In-Mud or out Adventuring in some beautiful location. If you share with us, we'll share with our followers.

UPLOAD

www.chiefproducts.com.au/share

EMAIL

connect@chiefproducts.com.au

HASHTAG

#ChiefProducts