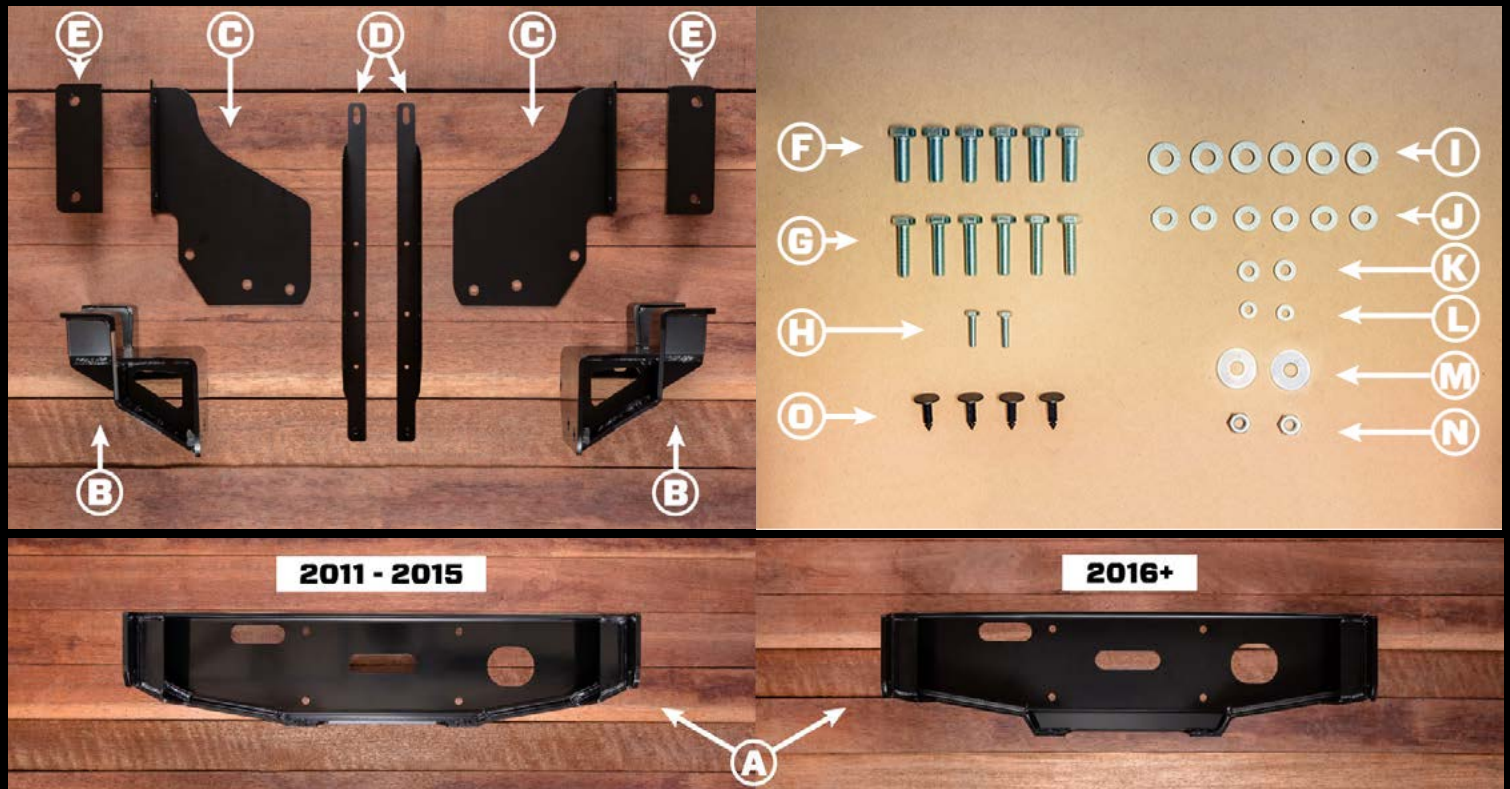


WK2 Hidden Winch Mount

Install Instructions



2011 - 2015

2016+

REF QTY DESCRIPTION

REF QTY DESCRIPTION

A	1	Centre Section (Winch Cradle)
B	2	Chassis Mounting Bracket (LH + RH)
C	2	Chassis Strengthening Plate (LH + RH)
D	2	Bonnet Support Strut (LH + RH)
E	2	Top Mounting Plate (E-Coat)
F	6	M12 x 35mm 10.9 Bolts (Zinc)
G	6	M10 x 40mm 10.9 Bolts (Zinc)
H	2	M6 x 25mm 10.9 (Zinc)
I	6	M12 Wedge-Lock Extended Washers (Zinc Flake)
J	6	M10 Wedge-Lock Extended Washers (Zinc Flake)
K	2	M8 Wedge-Lock Extended Washers (Zinc Flake)
L	2	M6 Wedge-Lock Extended Washers (Zinc Flake)

M	2	M10 x 32mm Flat Washer (Zinc)
N	2	M10 CL10 Nut (Zinc)
O	4	Plastic Trim Fastener
-	1	4g Anti-Seize Pouch
-	1	Chief Products Shop Rag

OPTIONAL EXTRAS

-	1	ACC Camera Kit
-	1	Air Suspension Kit
-	1	OEM Recovery Hooks Kit
-	1	WK2 Lower Front Guard Kit
-	1	Hawse Winch Fairlead

REQUIRED TOOLS

10mm Socket	Punch Tool
13mm Socket	Dremel Cutting Tool
16mm Socket	
19mm Socket	OPTIONAL
Ratchet & Ratchet Extension	Angle Grinder (w/ cutting wheel)
Flat Head Screwdriver	Touch-Up Paint

NOTES

- Do not over-tighten fasteners.
- Photos are representative only. They may show prototype parts and be taken from multiple vehicles.

IMPORTANT

- PROPER INSTALLATION IS ESSENTIAL TO THE PERFORMANCE OF THIS PRODUCT.
- ONLY INSTALL THIS PRODUCT ON A 2011-2018 JEEP GRAND CHEROKEE.
- ONLY USE THE PROVIDED HARDWARE FOR INSTALLATION.
- DO NOT MODIFY THE STRUCTURE OF THIS PRODUCT IN ANY WAY.
- CHECK PRODUCT REGULARLY FOR DAMAGE. REPLACE IMMEDIATELY AT FIRST SIGN OF DAMAGE.
- CHECK FASTENER TIGHTNESS REGULARLY AND TIGHTEN IF REQUIRED.

START (Next Page)

WK2 Hidden Winch Mount

Install Instructions

1

Remove Lower Fascia.

1. Remove the lower fascia and set aside. Refer to the Owners Manual for basic instructions.

NOTE

This can be a tricky process. If you need help, we provide a 'How To' article on our website, (www.chiefproducts.com.au/blogs/how-to/11555201-wk2-lower-front-fascia-removal-installation). You can also download a PDF of the process here, (www.chiefproducts.com.au/installation/wk2-lower-front-fascia-removal-and-installation.pdf).



2

Detach Fender Flare Fasteners.

1. Remove (1) M6 Bolt on each side, (drivers & passengers).
2. Remove (2) Plastic Rivets with punch tool on each side, (drivers & passengers).
3. Remove (2) plastic push fasteners on each side, (drivers & passengers).

NOTE

It might be easier to turn the wheel so that it points inwards.



3

Disconnet Fender Flares.

1. Pull the wheel well lining from under the fender towards the inside.
2. Push the (3) plastic tab style clips from the inside to release the front of the fender.
3. Pinch the (2) plastic clips above the wheel from the inside.
4. Do this for both sides (driver & passenger).



RECOMMENDED STEP

Place beer in freezer for later.

WK2 Hidden Winch Mount

Install Instructions

4

Remove Plastic Fasteners from Engine Bay.

1. Using a flat head screw-driver, remove (2) plastic push fasteners.



5

Disconnect Fog Lights.

1. Viewing from below, quarter twist to remove the fog lights from the upper fascia.
2. Do this for both sides (driver & passenger).



6

Remove Upper Fascia.

1. Unclip upper fascia from wheel wells on each side (drivers & passengers).
2. Unclip upper fascia from head lights in engine bay on each side (drivers & passengers)
3. Disconnect parking sensor wiring loom on right hand side of vehicle (if applicable).
4. Set aside the upper fascia in a safe place.

NOTE

For 2011-2012 Australian WK2's disconnect the headlight washer hose on the left side of the vehicle, (not shown).



WK2 Hidden Winch Mount

Install Instructions

7 ACC Camera

Remove ACC Camera.

1. Disconnect wiring loom from ACC camera.
2. Remove (2) M5 bolts holding the ACC camera bracket to the steel bumper.
3. Set ACC camera aside in a safe place.



8

Remove Foam Absorber.

1. Remove (2) plastic fasteners from the Foam Absorber.
2. Remove Foam absorber and set aside.

NOTE

This part is no longer required.



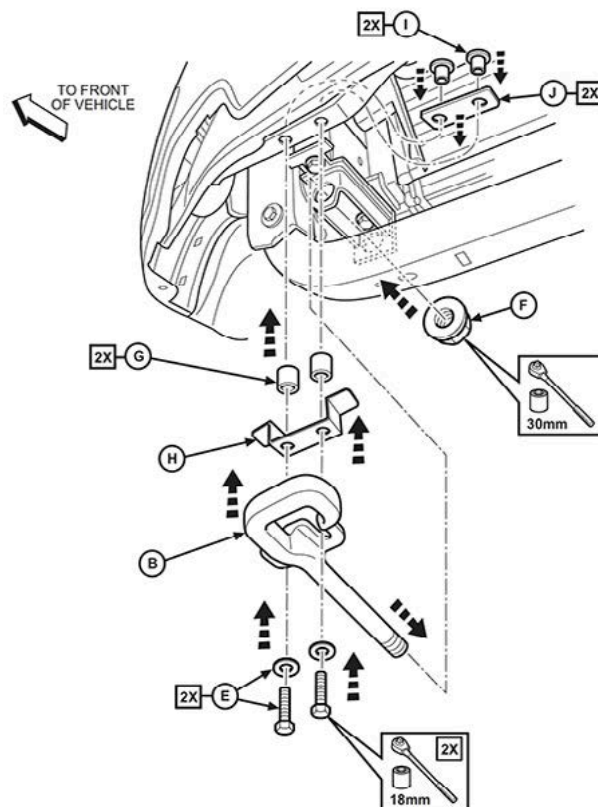
9 USA Models

Remove OEM Tow Hook.

1. Unbolt (2) M10 bolts [E in side diagram] holding front of Tow Hook to vehicle.
2. Unbolt 30mm Nut on backside [F in side diagram] and slide Tow Hook forward out of bracket.

NOTE

This step is only required for WK2s with OEM Tow Hooks. This diagram is taken from Mopar's official installation instructions.



WK2 Hidden Winch Mount

Install Instructions

10 USA Models

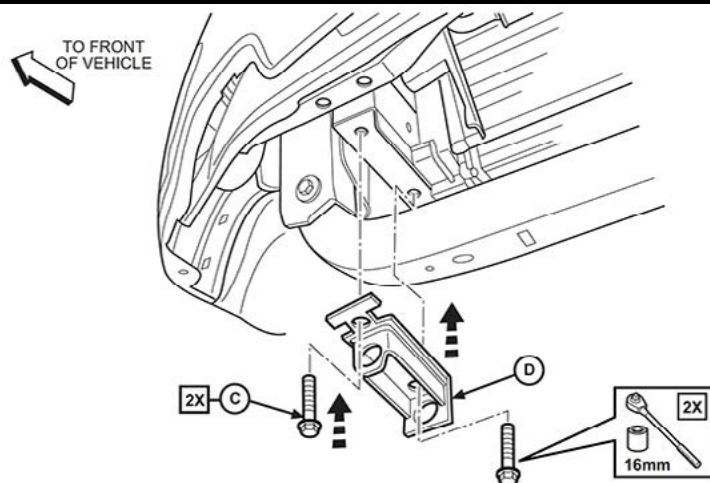
Remove OEM Tow Hook Bracket.

1. Unbolt (2) M10 bolts [C in side diagram] holding OEM Tow Hook bracket to vehicle.

The OEM Tow Hook Bracket can now be removed.

NOTE

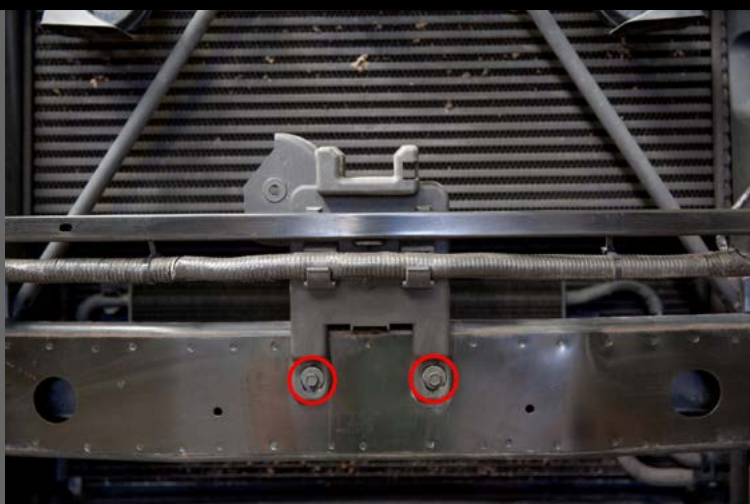
This step is only required for WK2s with OEM Tow Hooks. This diagram is taken from Mopar's official installation instructions.



11

Remove OEM Wiring Loom Plastic Bracket.

1. Remove (2) M5 bolts.
2. Remove OEM Wiring Loom Plastic Bracket and set aside.



12

Remove OEM Steel Bumper.

1. Remove (2) M8 Flanged Nuts (Blue Circle) from Air Compressor and set aside for later (if applicable).
2. Remove (1) M6 Bolt from each side (Blue Square).
3. Remove (3) M8 Bolts from each side (Red Circles).
4. Remove (2) M8 Bolts from bonnet struts (Red Squares).
5. Remove (2) Push Plastic Fasteners (Yellow Circle) from plastic parts on side, and set aside for use later.
6. Remove OEM Steel Bumper and set aside.



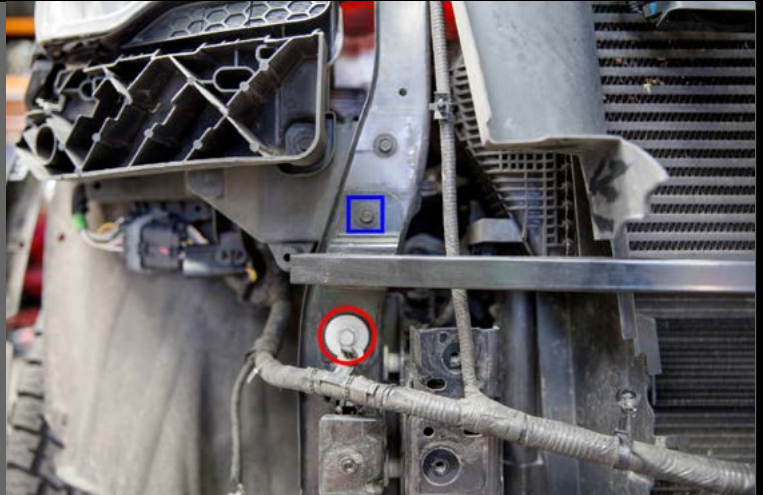
WK2 Hidden Winch Mount

Install Instructions

13

Remove OEM Wiring Loom Bar

1. Disconnect all clips from wiring loom bar.
2. Remove (1) M6 Bolt from each side (Blue Square).
3. Remove (1) M8 Bolt from each side (Red Circle).
4. Remove OEM Wiring Loom bar.



Begin Installation.

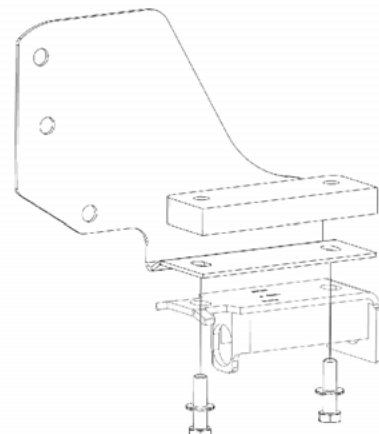
IF YOU HAVE:

- OEM TOW HOOKS (**GO TO STEP 14**).
- WK2 Lower Front Guard (**Go To Step 15**).
- WK2 Nudge Bar (**Go To Step 16**).
- WK2 Recovery Hook/Points (**Go To Step 17**).
- WK2 Nudge Bar + WK2 Recovery Hook/Points (**Go To Step 18**).
- WK2 Lower Front Guard + WK2 Nudge Bar + WK2 Recovery Hook/Points (**Go To Step 19**).
- NONE OF THE ABOVE (**Go To Step 20**).

14 OEM Tow Hooks.

Install Chassis Support Plates.

1. Place (1) Top Plate [E] on top of (1) Chassis Strengthening Plate [C] on top of the OEM Tow Hook Mounting Bracket.
2. Slip (1) Wedge-Lock Extended Washer [J] onto (1) M10 40mm bolt [G].
3. Holding the entire stack together, place against the frame and install (finger-tight) with (2) Bolt & Washer Combo.
4. Do this for both sides (passenger & driver).



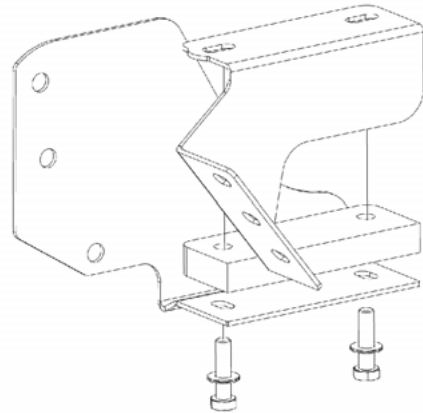
WK2 Hidden Winch Mount

Install Instructions

15 WK2 Lower Front Guard.

Install Chassis Support Plates.

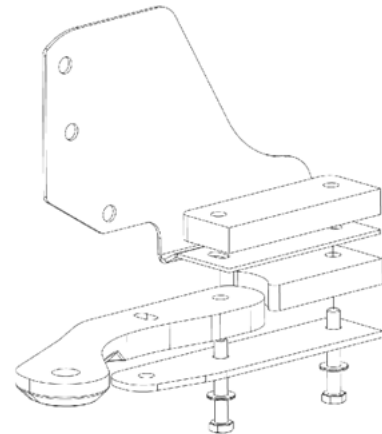
1. Place (1) WK2 Lower Front Guard Chassis Mounting Bracket on top (1) Top Plate [E] on top of (1) Chassis Strengthening Plate [C].
2. Slip (1) Wedge-Lock Extended Washer [J] onto (1) M10 40mm bolt [G].
3. Holding the entire stack together, place against the frame and install (finger-tight) with (2) Bolt & Washer Combo.
4. Do this for both sides (passenger & driver).



16 WK2 Nudge Bar.

Install Chassis Support Plates.

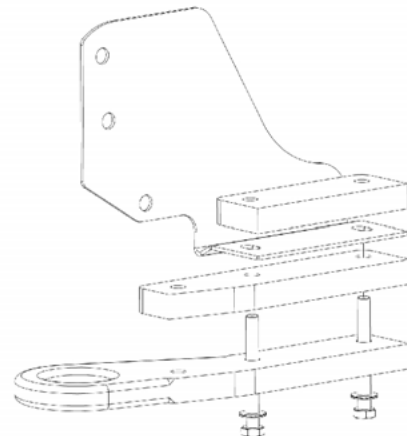
1. Place (1) Top Plate [E] on top of (1) Chassis Strengthening Plate [C] on top of the WK2 Nudge Bar mounting plates, (see photo).
2. Holding the entire stack together, place it against the frame and install (finger-tight), re-using your WK2 Nudge Bar install bolts, (M10 x 65mm Bolts & Wedge-Lock Washers), (see photo - far right).
3. Do this for both sides (passenger & driver).



17 WK2 Recovery Hook/Point

Install Chassis Support Plates.

1. Place (1) Top Plate [E] on top of (1) Chassis Strengthening Plate [C] on top of the WK2 Recovery Hook/Point mounting plates.
2. Holding the entire stack together, place it against the frame and install (finger-tight), re-using your WK2 Recovery Hook/Point install bolts, (M10 x 90mm Bolts & Wedge-Lock Washers).
3. Do this for both sides (passenger & driver).



WK2 Hidden Winch Mount

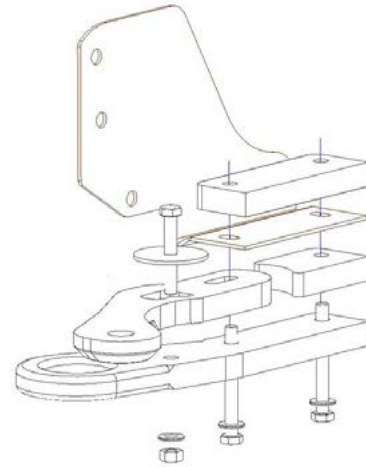
Install Instructions

18

WK2 Nudge Bar + WK2 Recovery Hook/Point

Install Chassis Support Plates.

1. Place (1) Top Plate [E] on top of (1) Chassis Strengthening Plate [C] on top of (1) WK2 Nudge Bar Arm + (1) WK2 Nudge Bar Rear Plate on top of (1) WK2 Recovery Hook/Point lower plate.
2. Holding the entire stack together, place it against the frame and install (finger-tight), re-using your WK2 Recovery Hook/Point install bolts, (M10 x 90mm Bolts & Wedge-Lock Washers).
3. Do this for both sides (passenger & driver).

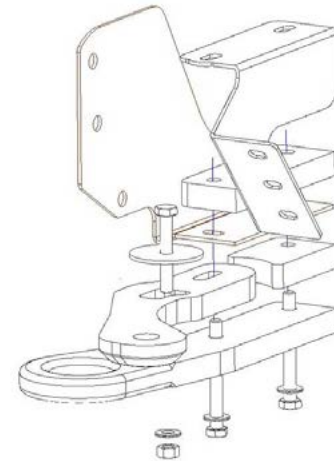


19

WK2 Lower Front Guard + WK2 Nudge Bar + WK2 Recovery Hook/Point

Install Chassis Support Plates.

1. Place (1) WK2 Lower Front Guard Chassis Mounting Bracket on top (1) Top Plate [E] on top (1) Chassis Strengthening Plate [C] on top of (1) WK2 Nudge Bar Arm + (1) WK2 Nudge Bar Rear Plate on top (1) WK2 Recovery Hook/Point lower plate.
2. Holding the entire stack together, place it against the frame and install (finger-tight), re-using your WK2 Recovery Hook/Point install bolts, (M10 x 90mm Bolts & Wedge-Lock Washers).
3. Do this for both sides (passenger & driver).



20

Install Chassis Support Plates.

1. Place (1) Top Plate [E] on top of (1) Chassis Strengthening Plate [C].
2. Slide (1) M10 Wedge-Lock Extended Washer [J] on top of (1) M10 40mm Bolt [G].
3. Holding the entire stack together, place it against the frame and install (finger-tight), using (2) Bolt & Washer Combos.
4. Do this for both sides (passenger & driver).



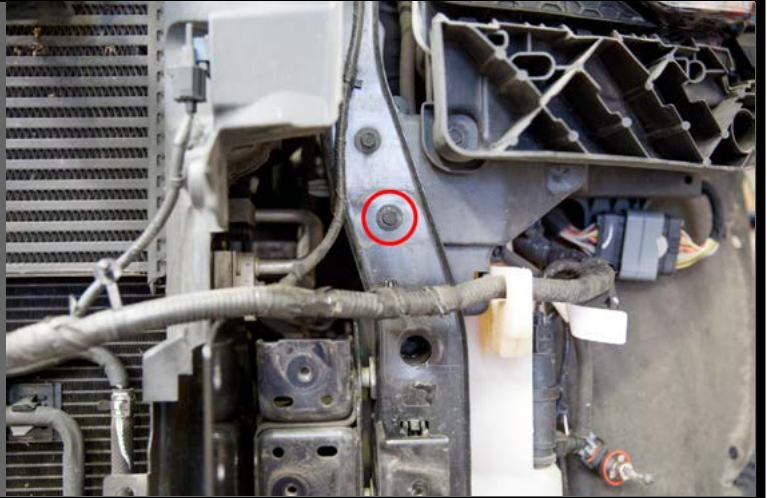
WK2 Hidden Winch Mount

Install Instructions

21

Install OEM Wiring Loom Bolt.

1. Install (1) M6 OEM Wiring Loom Bolt into frame.
2. Do this for both sides (passenger & driver).



IF YOU HAVE:

- Air Suspension Kit (*Go To Step 22*).
- NONE OF THE ABOVE (*Go To Step 23*).

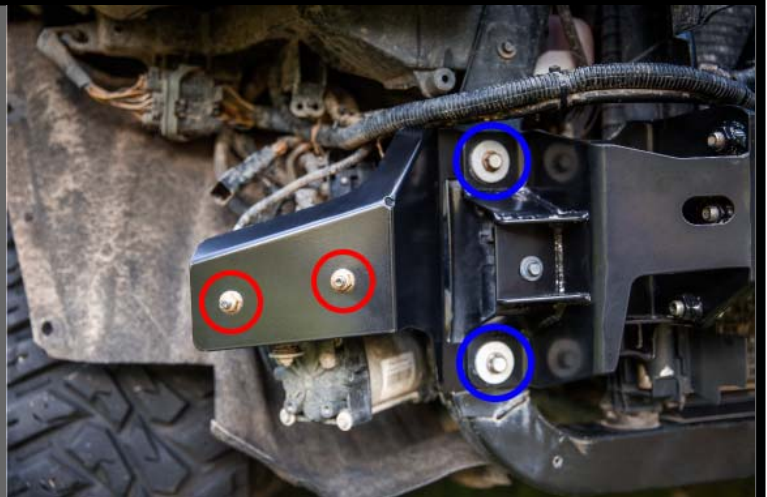
22 Air Suspension Kit (if applicable)

Install Air Suspension Bracket.

1. Slip the Air Suspension Bracket over the two fixed Air Suspension Bolts (Red Circles).
2. The mounting tabs on the Air Suspension Bracket should line up with the holes in the chassis.
3. Re-using (2) M8 Flanged Nuts (from Step 12) fasten the Air Suspension Bracket to the Air Compressor.

NOTE

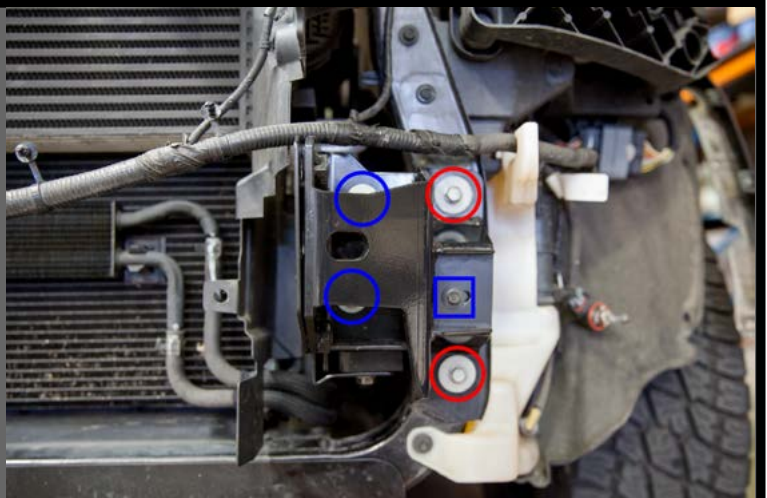
The (2) M8 x 100mm Bolts (Blue Circles) and Chassis Mounting Bracket [B] visible in the photo, will NOT be on the vehicle at this stage.



23

Install Chassis Mounting Brackets.

1. Hold (1) Chassis Mounting Bracket [B] against the frame and use (2) OEM M8 x 100mm Bolts (Red Circles), (2) OEM M8 x 40mm Bolts (Blue Circles) and (1) OEM M6 x 30mm Bolt (Blue Square) to attach bracket to vehicle, (finger-tight).
2. Do this for both sides (passenger & driver).



NOTES - AIR SUSPENSION KIT

If you have an Air Suspension Kit, install the Chassis Mounting Bracket [B] on top of the Air Suspension Bracket, so the tabs of the Air Suspension Bracket are sandwiched between the frame and the Chassis Mounting Bracket [B].

WK2 Hidden Winch Mount

Install Instructions

NOTES - WK2 LOWER FRONT GUARD

If you have a WK2 Lower Front Guard, remove the M8 x 8mm Bushing (Bottom Red Circle in Step 23) and place your WK2 Lower Front Guard - Corner Mounting Bracket on top of the Chassis Mounting Bracket [B].

24

Prepare for Centre Section Install.

1. Slip (1) M12 Wedge-Lock Extended Washer [I] onto (1) M12 35mm Bolt [F].
2. Install the Bolt & Washer combo into the top nut on the Mounting Bracket [B].
3. Do this for both sides (passenger & driver).



25

Install Centre Section.

1. Slip (1) M12 Wedge-Lock Extended Washer [I] onto (1) M12 35mm Bolt [F].
2. Slide Centre Section [A] onto the top M12 30mm Bolt & Washer Combo installed in the previous step.
3. Install the Bolt & Washer combo into the bottom nut on the Mounting Bracket [B].
4. Do this for both sides (passenger & driver).



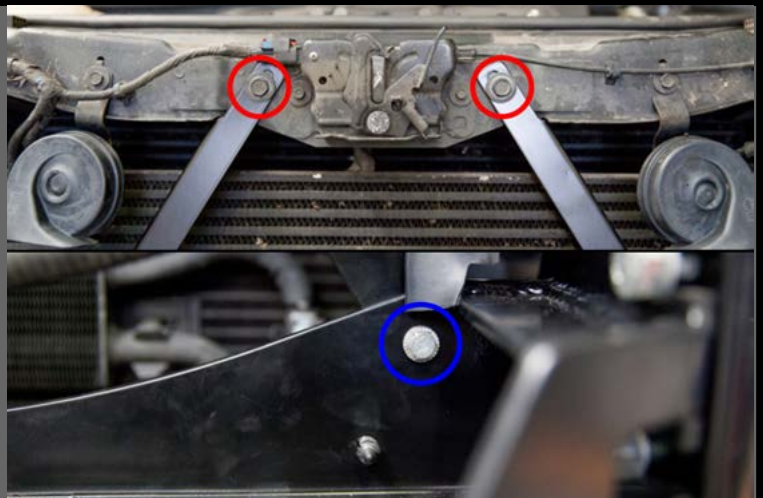
NOTE

The install process is the same for both versions of the winch cradle.

26

Install Bonnet Struts

1. Position (1) Bonnet Support Strut [D] against Centre Section [A] so the fold is away from the centre of the vehicle. Place end with nutsert so it lines up with hole in Winch Cradle. For 2011-2015 Winch Cradle place on the back side, for 2016+ Winch Cradle place inside.
2. Slip (1) M6 Wedge-Lock Extended Washer [L] onto (1) M6 25mm Bolt [H].
3. Attach (1) Bonnet Support Strut to Centre Section with the Bolt & Washer Combo (Blue Circle). Finger Tight.
4. Slip (1) M8 Wedge-Lock Extended Washer [K] onto (1) M8 x 30mm OEM Bolt (removed earlier).
5. Attach (1) Bonnet Support Strut [D] to Bonnet Support with the Bolt & Washer Combo (Red Circle). Finger Tight.
6. Do this for both sides (passenger & driver).



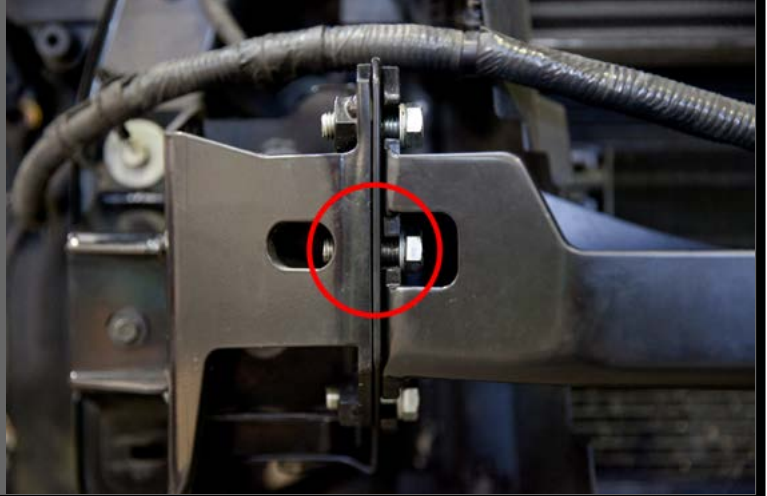
WK2 Hidden Winch Mount

Install Instructions

27

Install Final Centre Section Bolts.

1. Slip (1) M12 Wedge-Lock Extended Washer [I] onto (1) M12 35mm Bolt [F].
2. Install the Bolt & Washer combo into the middle nut on the Mounting Bracket [B].
3. Do this for both sides (passenger & driver).

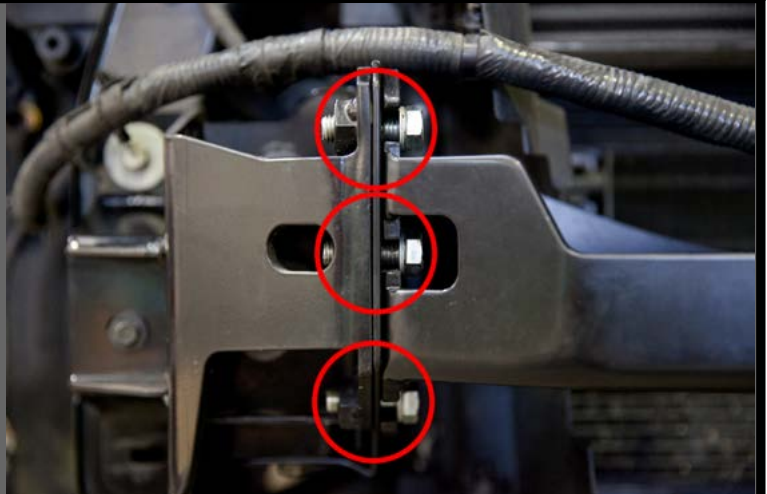


Tightening Sequence.

28

Tighten Center Section Bolts.

1. Pull the Centre Section [A] all the way forward.
2. Tighten (3) M12 35mm Bolts.
3. Do this for both sides (passenger & driver).



29

Tighten Chassis Support Plates.

1. Tighten (2) M10 40mm Bolts.
2. Do this for both sides (passenger & driver).



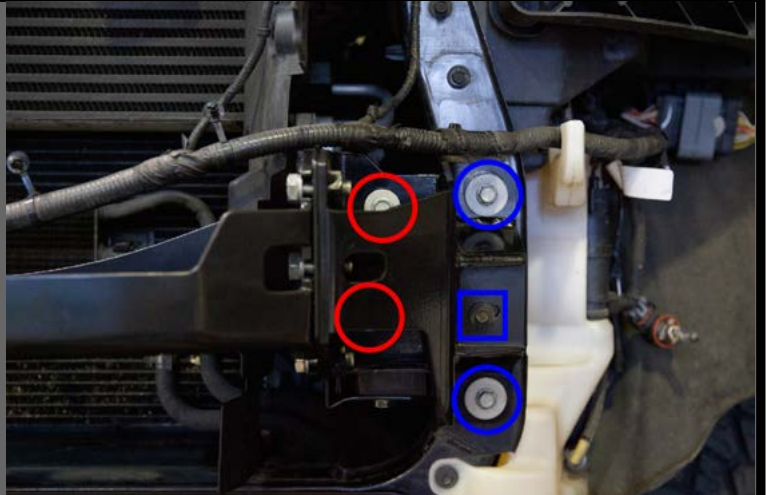
WK2 Hidden Winch Mount

Install Instructions

30

Tighten Mount Bracket.

1. Tighten (2) M8 40mm Bolts (Red Circle), (2) M8 100mm bolts (Blue Circle) and (1) M6 25mm bolt (Blue Square).
2. Do this for both sides (passenger & driver).



31

Reinstall Plastic Push Clips

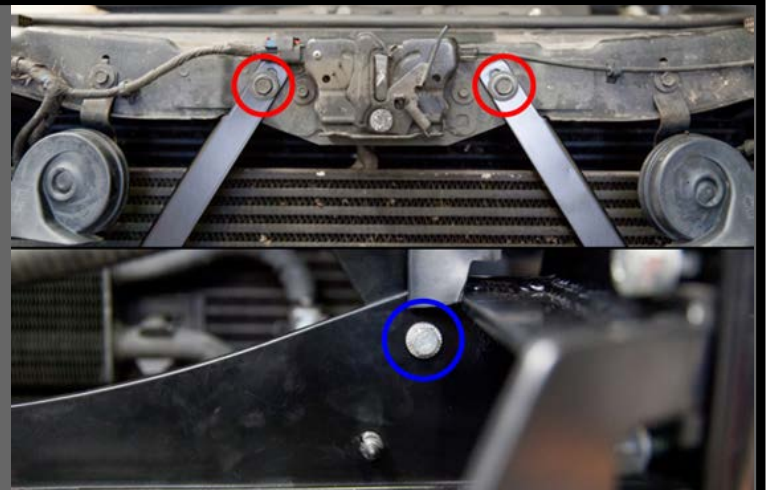
1. With (1) Plastic Push Clip, removed earlier (Step 12), reinstall to Centre Section [A].
2. Do this for both sides (passenger & driver).



32

Tighten Bonnet Struts

1. Tighten M6 x 25mm bolts (Blue Circle).
2. Tighten M8 OEM bolts (Red Circle).
3. Do this for both sides (passenger & driver).



WK2 Hidden Winch Mount

Install Instructions

33

Install Winch.

1. Place your winch in the Centre Section.
2. Install (2) M10 Bolts provided with your winch to the front (2) nuts on your winch.
3. Run both wires underneath the right headlight and into the engine bay.
4. Connect the positive wire to the positive terminal. Connect the negative wire to the negative terminal.

NOTE

If you want to 'clock' your winch, view step +1 on page 18.



34

Trim OEM Plastic Radiator Surround and Fix Wiring Loom.

1. On some models of WK2's you may have to trim the radiator surround plastic to allow the wiring loom to pass through. Using a sharp blade, cut a hole (red lines).
2. Fix the wiring loom with some zip ties to the Bonnet Struts [D] (red circles).



IF YOU HAVE:

- WK2 Lower Front Guard - Australian edition purchased before March 2017 (**Go To Step 35**).
- NONE OF THE ABOVE (**Go To Step 36**).

35

WK2 Lower Front Guard (Australian Pre-March 2017)

Remove Tabs from Australian Centre Section.

Australian versions of the WK2 Lower Front Guard purchased before March 2017 will need 2 metal tabs removed for installation with WK2 Hidden Winch Mount.

1. Draw a straight line across the base of tabs, in line with the top edge of the centre section.
2. Using an angle grinder and cutting wheel, cut across the lines. Be sure to clean up any sharp edges.
3. Using touch-up paint, spray the freshly cut area.

You can now install the WK2 Lower Front Guard.



NOTE - We use Anchor Bond Touch-Up Paint (Satin Black) which dries super fast and is designed to perfectly match powder coated colours and finishes.

WK2 Hidden Winch Mount

Install Instructions

IF YOU HAVE:

- ACC Camera Kit (**GO TO STEP 36**).
- WK2 Lower Front Guard Kit (**Go To Step 38**).
- OEM Tow Hook Kit (**Go To Step 39**).
- WK2 Lower Front Guard Kit + ACC Camera Kit (**Go To Step 40**).
- NONE OF THE ABOVE (**Go To Step 41**).

36 ACC Camera Kit (if applicable)

Modify OEM ACC Camera Bracket.

1. Hold your OEM ACC Camera Bracket against the ACC Camera Kit. In some cases the holes on the OEM ACC Camera Bracket aren't long enough.
2. Using a drill and appropriately sized drill bit, lengthen the existing holes to line up with the ACC Camera Kit nutserts (red circles).



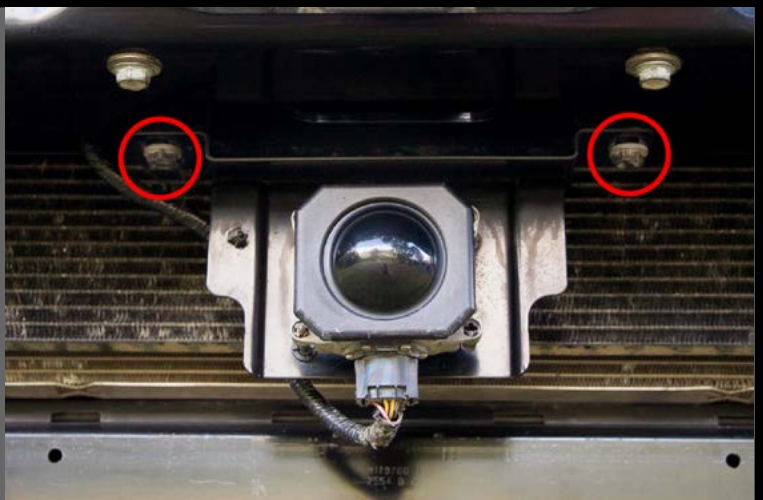
NOTE

Most people should not require this step.

37 ACC Camera Kit (if applicable)

Install ACC Camera.

1. Slip (1) M6 Wedge-Lock Extended Washer over (1) M6 16mm Bolt.
2. Hold your ACC Camera against the ACC Camera Kit Bracket so the nutserts on the bracket are towards the inside of the vehicle. Install the Bolt & Washer combo into both nuts.
3. Slip (1) M10 Wedge-Lock Extended Washer [J] over (1) M10 40mm Bolt [G].
4. Hold your ACC Camera Mount Kit and ACC Camera combo against the rear (2) Winch nuts. Use the M10 Bolt & Washer combo to install. Do this for both rear winch nuts.
5. Connect ACC Camera Loom.



NOTE

If you are not installing a winch use (1) M10 Flat Washer [M] with (1) M10 Nut [N] for the M10 Bolt & Washer Combo.

ACC CAMERA ADJUSTMENT (if required)

If you get an error that the camera is obstructed, ensure there is nothing blocking the view of the camera, (i.e. fairlead sitting below the bottom of the winch cradle). Make sure the ACC Camera is all the way forward as far as it will go. Make sure the camera is pointing straight (parallel to the ground). If it is pointing upward, bend the OEM camera bracket so that it points straight.

WK2 Hidden Winch Mount

Install Instructions

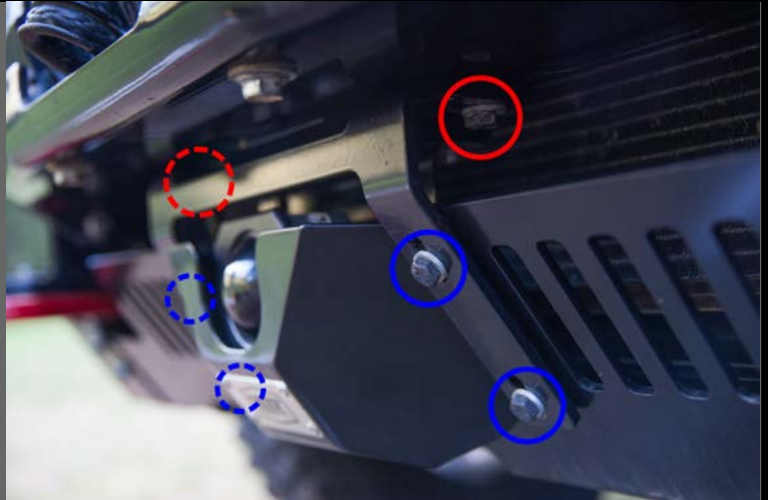
38 WK2 Lower Front Guard Kit (if applicable)

Install WK2 Lower Front Guard.

1. Install WK2 Lower Guard as per instructions.
2. Slip (1) M8 Wedge-Lock Extended Washer over (1) M8 25mm Bolt (supplied with WK2 Lower Front Guard).
3. Hold your WK2 Lower Front Guard Non-Camera Guard against your WK2 Lower Front Guard Centre Section. Hold the WK2 Lower Front Guard Bracket over your WK2 Lower Front Guard Non-Camera Guard.
4. Install Bolt & Washer Combo for for each (4) nuts on the WK2 Lower Front Guard Centre Section. (Blue Circle).
5. Slip (1) M10 Wedge-Lock Extended Washer [J] over (1) M10 40mm Bolt [G].
6. Install Bolt & Washer combo to rear (2) Nuts on Winch (Red Circle).

NOTE

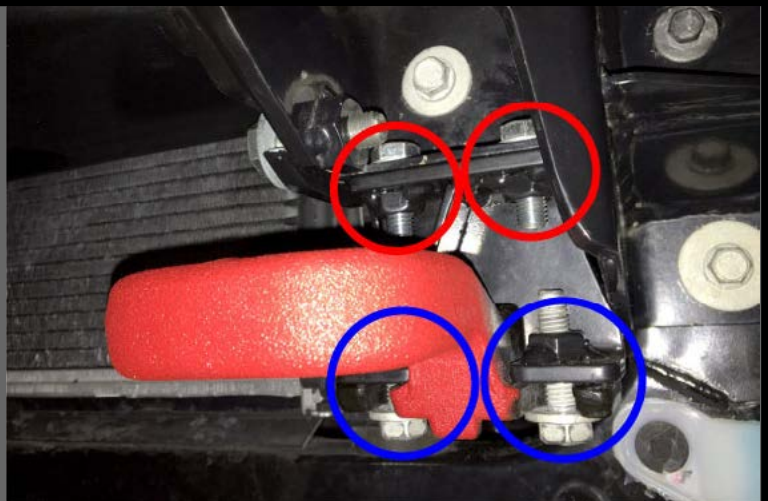
If you are not installing a winch use (1) M10 Flat Washer [M] with (1) M10 Nut [N] for the M10 Bolt & Washer Combo.



39 OEM Tow Hooks Kit (if applicable)

Install OEM Tow Hooks.

1. Slide (1) M10 Wedge-Lock Extended Washer on (1) M10 25mm Bolt (supplied with the OEM Tow Hook Kit).
2. Install (1) OEM Tow Hook Kit Bracket to the WK2 Hidden Winch Mount Mount Bracket [B] with the Bolt and Washer Combo (red circle).
3. Do this for both sides.
4. Slide (1) M10 Wedge-Lock Extended Washer on (1) M10 30mm Bolt (supplied with the OEM Tow Hook Kit).
5. Using the right side OEM tow hook install on the left side upside down to the OEM Tow Hook Kit Bracket with the Bolt and Washer combo (blue circle).
6. Install 30mm OEM Nut on backside of Tow Hook.
7. Tighten all bolts.
8. Do this for both sides.



DAD JOKE

My wife left me because I'm too insecure.
No wait, she's back.
She just went to make a cup of tea.

WK2 Hidden Winch Mount

Install Instructions

40

ACC Camera Kit + WK2 Lower Front Guard Kit (if applicable)

Install WK2 Lower Front Guard.

1. Install WK2 Lower Guard as per instructions.
2. Slip (1) M6 Wedge-Lock Extended Washer over (1) M6 x 16mm Bolt (supplied with ACC Camera Kit).
3. Hold your ACC Camera against the ACC Camera Mount Kit Bracket. Install the M6 Bolt & Washer combo for both nuts and tighten.
4. Slip (1) M10 Wedge-Lock Extended Washer [J] over (1) M10 x 40mm Bolt [G].
5. Place the ACC Camera and ACC Camera Mount Kit combo against the top face of the WK2 Lower Front Guard Bracket.
6. Holding the ACC Camera Mount Kit and WK2 Lower Front Guard Mount Kit against the (2) rear nuts of the winch, install the M10 Bolt & Washer combo for one of the nuts (Red Circle).
7. Slip (1) M8 Wedge-Lock Extended Washer [K] over (1) M8 25mm Bolt, do this (4) times. (supplied with WK2 Lower Front Guard).
8. Slide the WK2 Lower Front Guard - Camera Guard between the WK2 Lower Front Guard Centre Section and the WK2 Lower Front Guard Mount Kit.
9. Install M8 Bolt & Washer Combo for for each (4) nuts on the WK2 Lower Front Guard Centre Section. (Blue Circle).
10. Install (1) M10 Bolt & Washer combo to the final rear nut on Winch (Red Circle).
11. Tighten all bolts.

NOTE

If you are not installing a winch use (1) M10 Flat Washer [M] with (1) M10 Nut [N] for the M10 Bolt & Washer Combo.



41

Trim Plastic Tab from OEM Upper Facia.

1. Using a Dremel cutting tool, cut the plastic tab on the back side of the OEM Upper Facia.

NOTE

To avoid scratches it's helpful to place a towel underneath the upper fascia for this step.



WK2 Hidden Winch Mount

Install Instructions

42

Reinstall OEM Upper Facia.

1. Connect the parking sensor wiring loom on the right side of the vehicle.
2. Starting at the top clip the OEM Upper Facia at the engine bay, around the lights and wheel wells.

NOTE

For 2011-2012 Australian WK2's reconnect the headlight washer hose on the left side of the vehicle.



43

Reinstall Engine Bay Plastic Fasteners.

1. Reusing the OEM Plastic Push Fastener, re-install in the engine bay.



44

Reinstall Fog Lights.

1. Viewing from below, quarter twist to reinstall the fog lights in the OEM Upper Facia.
2. Do this for both sides (driver & passenger).



WK2 Hidden Winch Mount

Install Instructions

45

Reinstall Fender Flairs.

1. Working your way forwards push the clips for each fender flair back into the body.
2. Do this for both sides (driver & passenger).



46

Reinstall Fender Flair Fasteners.

1. Tuck Wheel Well liner behind Fender Flairs
2. Install (1) OEM M6 Bolt.
3. Install (2) Christmas Tree Plastic Fasteners [M].
4. Install (2) plastic push fasteners.
5. Do this for both sites (driver & passenger).

NOTE

It might be easier to turn the wheel so that it points inwards.



47 Hawse Winch Fairlead (if applicable)

Install Hawse Winch Fairlead.

1. Place the Winch Rope through the centre hole on the Hawse Winch Fairlead.
2. Holding the Hawse Winch Fairlead against the WK2 Hidden Winch Mount - Centre Section [A], install with (2) M12 30mm Socket Head Cap Screws (provided with Fairlead).



REMINDER

Don't forget about the beer in the freezer!

WK2 Hidden Winch Mount

Install Instructions

48

Install OEM Lower Front Facia.

1. Cut out a hole in the OEM Lower Front Facia to match the outline of your fairlead.
2. Install the OEM Lower front Facia over the fairlead.

NOTE

If you're using the Chief Products Hawse Winch Fairlead, you can use the sticker template provided with the fairlead to cut an exact hole in your lower front fascia.



The WK2 Hidden Winch Mount is now fully installed.

+1

Clock Winch.

1. Referring to the instructions supplied by your winch manufacturer, clock the winch so that the clutch handle is rotated downwards to place through the large hole in the centre section [A] (red circle).



MAINTENANCE

FASTENERS

- Check fastener tightness regularly and tighten if required. We recommend checking fasteners after every large off-road trip.

CORROSION PROTECTION

- After an off-road trip; rinse all mud, sand or debris off the product.
- After driving in salt water; rinse product thoroughly with fresh water.

EXTRA CARE

- If you're planning to drive in a salty environment; spray fasteners with WD40 or an equivalent.
- If you're planning to drive in a salty environment; spray product with Lanolin or an equivalent.
- Spray deep scratches (before they rust) with touch up paint to help inhibit corrosion.



WK2 Hidden Winch Mount

Install Instructions

SUPPORT

Find answers online.

www.chiefproducts.com.au/pages/support

Having troubles? Make sure you've downloaded the most recent version of these instructions from our website. We occasionally make updates.

www.chiefproducts.com.au/installation/wk2-hidden-winch-mount.pdf

If you need additional help, send us an email.

support@chiefproducts.com.au

SHARE

Looking to share epic photos of your WK2?

Send us your photos - Unboxing, Fully Installed, Painted-In-Mud or out Adventuring in some beautiful location. If you share with us, we'll share with our followers.

UPLOAD

www.chiefproducts.com.au/share

EMAIL

connect@chiefproducts.com.au

HASHTAG

#ChiefProducts #GrandAdventure