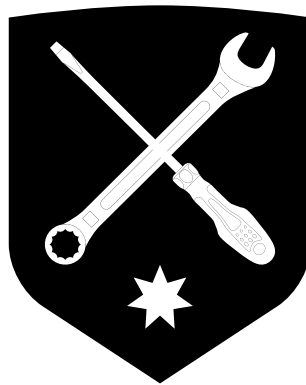


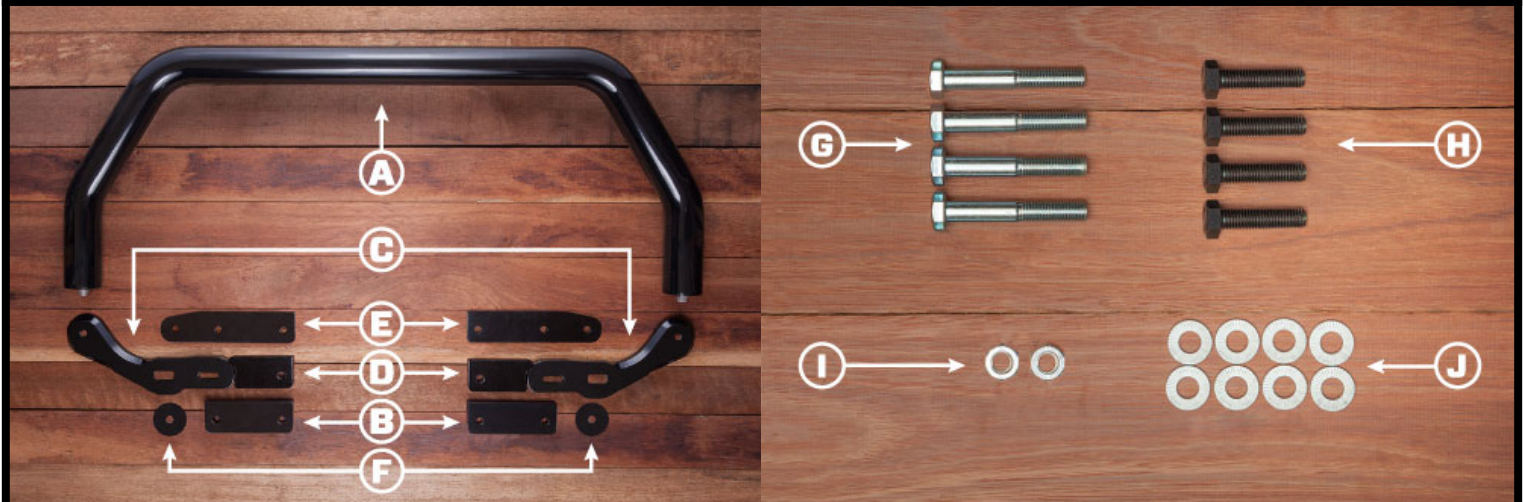


# **WK2 NUDGE BAR**

## INSTALL INSTRUCTIONS

**REVISION I**  
8 APRIL 2021





REF	QTY	DESCRIPTION	REF	QTY	DESCRIPTION
A	1	Nudge Bar (Gloss Black or Polished)	-	1	4g Anti-Seize Pouch
B	2	Top Mounting Plate (20mm)	-	1	Chief Products Shop Rag
C	2	Mounting Arm			
D	2	Rear Mounting Plate (20mm)			
E	2	Bottom Mounting Plate (5mm)			
F	2	M10 x 60mm Washer (3mm)			
G	4	M10 x 65mm 10.9 Bolt (Black Zinc)			
H	4	M10 x 40mm 10.9 Bolt (Black Zinc)			
I	2	M10 CL10 Nut (Zinc)			
J	8	M10 Wedge-Lock Washers (Zinc)			

#### REQUIRED TOOLS

16mm Socket  
16mm Wrench  
Ratchet & Ratchet Extension  
Screwdriver (flat blade)

POSSIBLE - 30mm Socket  
POSSIBLE - 18mm Socket  
POSSIBLE - Dremel Cutting Tool

#### NOTES

- DO NOT OVER-TIGHTEN FASTENERS.
- LEFT & RIGHT SIDES ARE DEFINED FROM THE DRIVERS POSITION.
- PHOTOS ARE REPRESENTATIVE ONLY. Photos shown in these Install Instructions - may show prototype parts, may be taken from multiple vehicles and may be different than your vehicle. Due to global vehicle variances, model year changes and differing model options (engine, options, etc.) it is impossible to provide photos that are 100% accurate for all customers.

#### IMPORTANT

- PROPER INSTALLATION IS ESSENTIAL TO THE PERFORMANCE OF THIS PRODUCT.
- ONLY INSTALL THIS PRODUCT ON A 2011-2021 JEEP GRAND CHEROKEE.
- ONLY USE THE PROVIDED HARDWARE FOR INSTALLATION.
- DO NOT MODIFY THE STRUCTURE OF THIS PRODUCT IN ANY WAY.
- CHECK PRODUCT REGULARLY FOR DAMAGE. REPLACE IMMEDIATELY AT FIRST SIGN OF DAMAGE.
- CHECK FASTENER TIGHTNESS REGULARLY AND TIGHTEN IF REQUIRED.

1

#### Remove Lower Fascia.

1. Remove the lower fascia and set aside. Refer to the Owners Manual for basic instructions.

#### NOTE

This can be a tricky process. If you need help, we've provided a 'How To' article on our website, ([www.chiefproducts.com.au/blogs/how-to/11555201-wk2-lower-front-fascia-removal-installation](http://www.chiefproducts.com.au/blogs/how-to/11555201-wk2-lower-front-fascia-removal-installation)).



START PREPARATION



### IF YOU HAVE:

- OEM Screw-In Hook (**Go To Step 2**)
- OEM Tow Hooks (**Go To Step 4**)
- Chief Products WK2 Recovery Hooks/Points (**Go To Step 6**)
- Chief Products WK2 Lower Front Guard (**Go To Step 7**)
- NONE OF THE ABOVE (**Go To Step 8**)

## 2 OEM Screw-In Hook

### Remove OEM Screw-In Hook Threaded Tube.

1. Remove 21mm bolt on back of bracket. With the bolt removed, slide the threaded tube out of the bracket. You will now have access to the frame mounting bolts.

#### NOTE

This step is not required for 2013+ WK2s. They have a different OEM bracket (see STEP 3 PHOTO).



## 3 OEM Screw-In Hook

### Remove OEM Screw-In Hook Bracket.

1. Remove (2) M10 Bolts holding bracket to frame.
2. If needed, do this on both sides (passenger & driver).

--> The OEM Screw-In Hook Bracket can now be removed.



SKIP TO STEP 8

## 4 OEM Tow Hooks

### Remove OEM Tow Hooks.

1. Remove 30mm Nut from back of OEM Tow Hook.
2. Loosen (2) 18mm Bolts where OEM Tow Hooks are mounted to bumper frame.
3. Do this on both sides (passenger & driver).

\* The OEM Tow Hooks can now be removed.





## 5 OEM Tow Hooks

### Remove OEM Tow Hook Brackets.

1. Remove (2) M10 Bolts holding each bracket to frame.
2. Do this on both sides (passenger & driver).

*\* The OEM Tow Hook Brackets can now be removed*



**SKIP TO STEP 8**

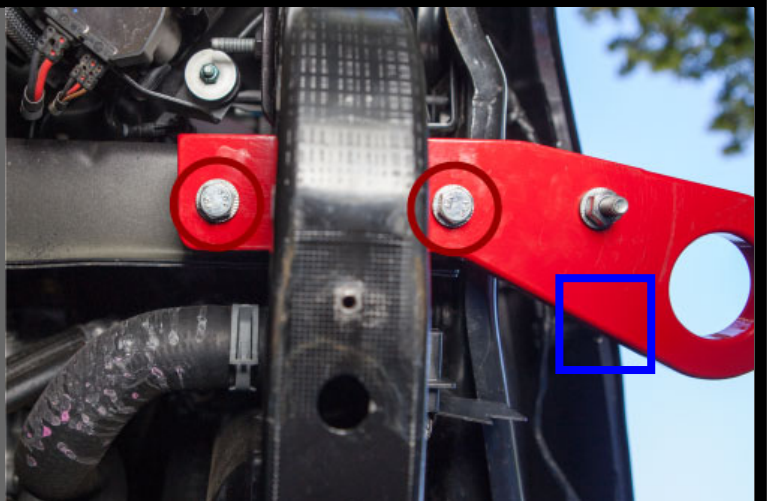
## 6 WK2 Recovery Point-Hook

### Remove WK2 Recovery Point-Hook.

1. Remove (2) M10 Bolts holding the stack (recovery point-hook and mounting plates) to the frame, (red circles). Set aside.
2. Remove (1) M10 x 65mm Bolt holding the WK2 Recovery Point-Hook to the Middle Mounting Plate, (blue square).
3. Do this on both sides (passenger & driver).

#### NOTE

Retain M10 bolts, they'll be needed for re-installation.



**SKIP TO STEP 8**

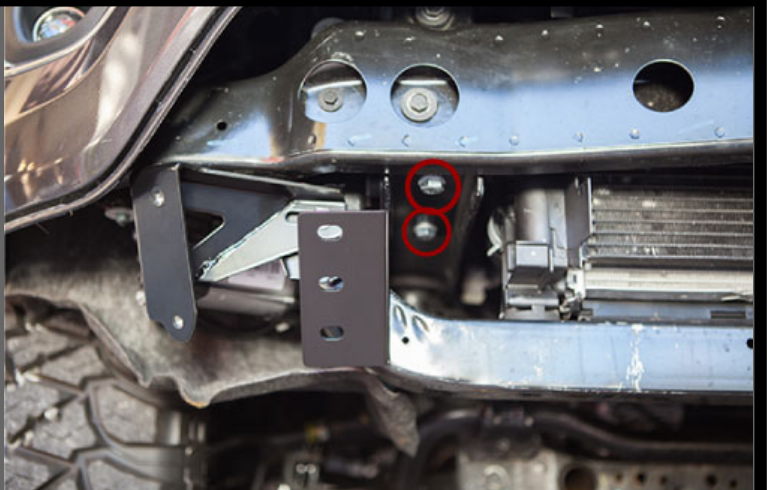
## 7 WK2 Lower Front Guard

### Remove WK2 Lower Front Guard.

1. Remove (2) WK2 Lower Front Guard Corner Guards.
2. Remove (2) M10 Bolts holding the chassis mounting bracket to the frame, (see photo).
3. Do this on both sides (passenger & driver)

#### NOTE

It's not required but the WK2 Lower Front Guard Centre Section can be removed to gain better access. The M10 Bolts you remove are not needed.



Begin Installation



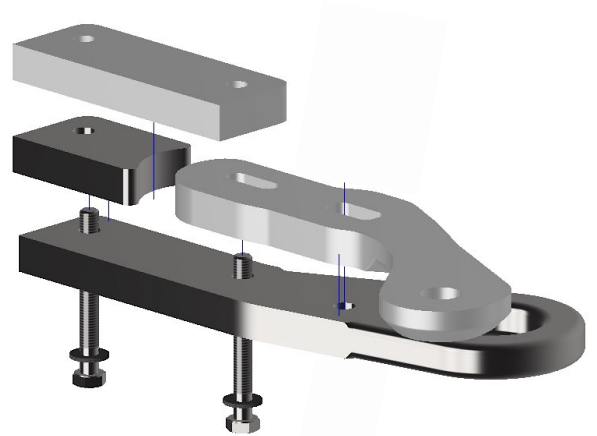
**IF YOU HAVE:**

- Chief Products WK2 Recovery Point-Hook (*Go To Step 8*)
- Chief Products WK2 Lower Front Guard (*Go To Step 9*)
- Chief Products WK2 Lower Front Guard & WK2 Recovery Point-Hook (*Go To Step 10*)
- Chief Products WK2 Hidden Winch Mount (*Go To Step 11*)
- NONE OF THE ABOVE (*Go To Step 12*)

**8 WK2 Recovery Point-Hook**

**Install Mounting Brackets to Chassis.**

1. Place the Top Mounting Plate [B] on top of Rear Mounting Plate [D] and Mounting Arm [C]. Place WK2 Recovery Point-Hook on the bottom of the stack, (see photo).
2. Holding the entire stack together, place it against the frame and install (finger-tight), re-using your WK2 Recovery Point-Hook install bolts, (M10 x 90mm Bolts & Wedge-Lock Washers).
3. Do this for both sides, (passenger & driver).

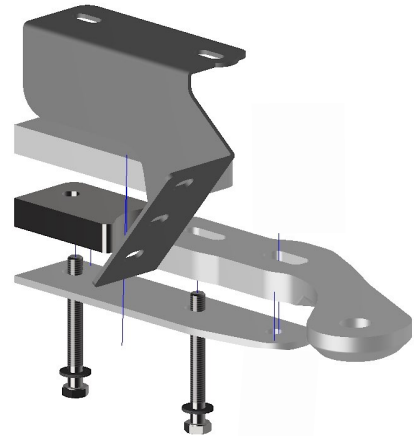


**SKIP TO STEP 13**

**9 WK2 Lower Front Guard**

**Install Mounting Brackets to Chassis.**

1. Place Top Mounting Plate [B] on top of Rear Mounting Plate [D] and Mounting Arm [C]. Place Bottom Mounting Plate [E] on bottom of stack and WK2 Lower Front Guard Chassis Mounting Bracket on top of stack, (see photo).
2. Holding the entire stack together, place it against the frame and install (finger-tight), using (2) M10 x 65mm Bolts [G] and (2) Wedge-Lock Washers [J].
3. Do this for both sides, (passenger & driver).



**SKIP TO STEP 13**

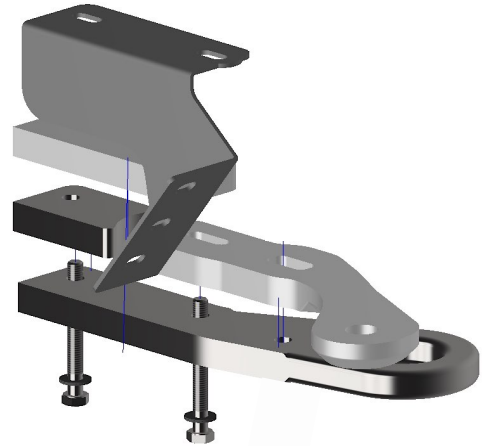
**DAD JOKE**

If someone asks you to spell "part" backwards, don't do it. It's a trap!

## 10 WK2 Lower Front Guard & WK2 Recovery Point-Hook

### Install Mounting Brackets to Chassis.

1. Place Top Mounting Plate [B] on top of Rear Mounting Plate [D] and Mounting Arm [C]. Place WK2 Recovery Point-Hook on bottom of stack and WK2 Lower Front Guard Chassis Mounting Bracket on top of stack, (see photo).
2. Holding the entire stack together, place it against the frame and install (finger-tight), re-using your WK2 Recovery Point-hook install bolts, (M10 x 90mm Bolts & Wedge-Lock Washers).
3. Do this for both sides, (passenger & driver).

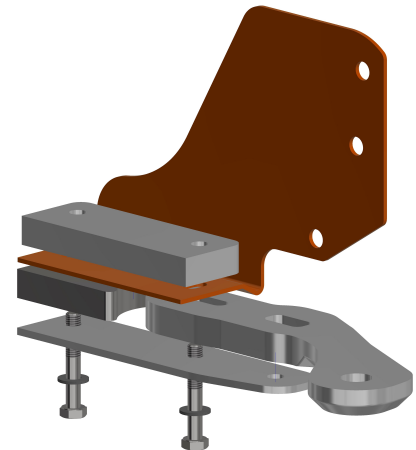


**SKIP TO STEP 13**

## 11 WK2 Hidden Winch Mount

### Install Mounting Brackets to Chassis.

1. Place Top Mounting Plate [B] on top of WK2 Hidden Winch Mount Chassis Mounting Bracket, Rear Mounting Plate [D] and Mounting Arm [C]. Place Bottom Mounting Plate [E] on bottom of stack, (see photo).
2. Holding the entire stack together, place it against the frame and install (finger-tight), using (2) M10 x 65mm Bolts [G] and (2) Wedge-Lock Washers [J].
3. Do this for both sides, (passenger & driver).

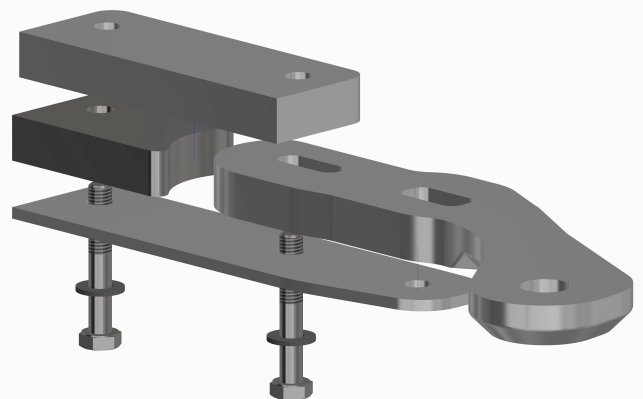


**SKIP TO STEP 13**

## 12

### Install Mounting Brackets to Chassis.

1. Place Top Mounting Plate [B] on top of Rear Mounting Plate [D] and Mounting Arm [C]. Place Bottom Mounting Plate [E] on bottom of stack, (see photo).
2. Holding the entire stack together, place it against the frame and install (finger-tight), using (2) M10 x 65mm Bolts [G] and (2) Wedge-Lock Washers [J].
3. Do this for both sides, (passenger & driver).



### NOTES

- Ensure the mounting plates & brackets line up evenly along the back and sides.
- It can be difficult to access the rear mounting bolt if you have our WK2 Sump Protection Plate installed, (especially on the left side due to the windshield washer bottle). By unbolting the wheel well liner from the side of the WK2 Sump Protection Plate (or OEM 'Belly Pan') you can reach from behind to more easily access the rear mounting bolt.

## 13

### Prepare 'Lower Front Fascia'.

1. Remove the 'pop-out' plastic parts by pushing on them from behind to reveal access holes.
2. If you don't have 'pop-out' plastic parts, you'll need to cut access holes in the lower fascia using a dremel or similar tool.

#### NOTE

Cutting is required on all Summit, High Altitude, export 75th Anniversary, and export 2017+ models without OEM Tow Hooks. These models do not provide holes in the lower fascia for access to the points.



## 14

### Re-Install 'Lower Front Fascia'.

1. Slide the (2) Mounting Arms [C] inward so they will go through the holes in the lower fascia, (step 13). When sliding the Mounting Arms [C] be careful not to scratch the WK2 Recovery Point-Hook (if installed).
2. Re-install the lower fascia.

#### NOTE

If you need help removing the lower fascia, we've provided a 'How To' article on our website, ([www.chiefproducts.com.au/blogs/how-to/11555201-wk2-lower-front-fascia-removal-installation](http://www.chiefproducts.com.au/blogs/how-to/11555201-wk2-lower-front-fascia-removal-installation)).



### IF YOU HAVE:

- Chief Products WK2 Recovery Point-Hook (**Go To Step 15**)
- NONE OF THE ABOVE (**Go To Step 16**)

## 15 WK2 Recovery Point-Hook

### Install Strengthening Bolt.

1. Using the hardware from Step 6 - Slide (1) M10 x 65mm Bolt through (1) M10 x 60mm Washer [F] (*highlighted in red*) then down through the forward most mounting hole. Slide (1) Wedge-Lock Washer onto the shaft of the M10 x 65mm Bolt and then attach the CL10 Nut. Leave loose.
2. Do this for both sides, (passenger & driver).

#### NOTE

If you have a USA model and plan to remove the Lower Fascia regularly, install the strengthening bolt from the bottom up, (nut on top). Recommended M10 Bolt Torque = 90Nm (Dry) or 74Nm (Anti-Seize)



PREVIOUS VERSION SHOWN

**SKIP TO STEP 17**



## 16

### Install Strengthening Bolt.

1. Slide (1) M10 x 40mm Bolt [H] through (1) M10 x 60mm Washer [F] (*highlighted in red*) then down through the forward most mounting hole. Slide (1) Wedge-Lock Washer [I] onto the shaft of the M10 x 40mm Bolt [H] and then attach the CL10 Nut [I]. Leave Loose.
2. Do this for both sides, (passenger & driver).

#### NOTE

If you have a USA model and plan to remove the Lower Fascia regularly, install the strengthening bolt from the bottom up, (nut on top). Recommended M10 Bolt Torque = 90Nm (Dry) or 74Nm (Anti-Seize)



## 17

### Install Nudge Bar Assembly.

1. Place the tabs of the Nudge Bar Assembly [A] into the tapered holes of each Mounting Arm [C].
2. Slide each M10 x 40mm Bolt (black) [H] through (1) Wedge-Lock Washer [J] and install through the bottom of each Mounting Arm [C] into the Nudge Bar Assembly [A]. Finger Tighten.



## 18

### Align Nudge Bar Assembly.

1. Take a step back from the front of your WK2 so you can see the position of the Nudge Bar. Move the Nudge Bar side-to-side so it is placed in the middle of the vehicle.

#### NOTE

If you're having trouble moving the bar, you may need to loosen some of the mounting bolts.





## 19

### Check Parking Sensor Compatibility.

Now that your Nudge bar is centred, ensure that it is not interfering with the front parking sensors.

*\* At the end of these instructions are detailed adjustment instructions for aligning the Nudge Bar with the Front Parking Sensors.*



## 20

### Tighten Mounting Bracket Bolts.

Being careful not to move the bar.

1. Tighten the (2) rear bolts attaching the mounting brackets to the chassis.
2. Do this for both sides, (passenger & driver).

#### NOTE

Recommended M10 Bolt Torque = 90Nm (Dry) or 74Nm (Anti-Seize)



PREVIOUS VERSION SHOWN

### NOTES

It can be difficult to access the rear mounting bolt if you have our WK2 Sump Protection Plate installed. This can be especially difficult on the left side due to the location of the windshield washer bottle. By unbolting the wheel well liner from the side of the WK2 Sump Protection Plate (or OEM 'Belly Pan') you can reach from behind to more easily access the rear mounting bolt.

## 21

### Tighten Strengthening Bolts.

Being careful not to move the bar.

1. Tighten the strengthening bolt.
2. Do this for both sides, (passenger & driver).

#### NOTE

Recommended M10 Bolt Torque = 90Nm (Dry) or 74Nm (Anti-Seize)



PREVIOUS VERSION SHOWN

**22**

**Tighten Bar Assembly Bolts.**

1. Tighten the (2) M10 x 40mm Bolts (black) [H] holding the Nudge Bar Assembly [A] to the Mounting Plate (front) [C].
2. Do this for both sides, (passenger & driver).

**NOTE**

Recommended M10 Bolt Torque = 90Nm (Dry) or 74Nm (Anti-Seize)



PREVIOUS VERSION SHOWN

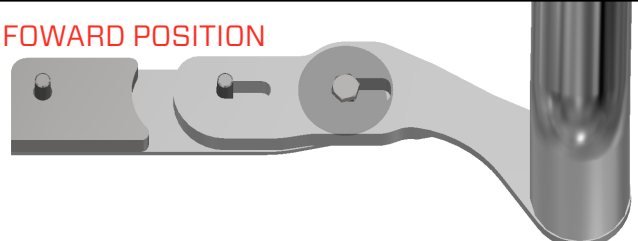
WK2 Nudge Bar is now fully installed.

**PARKING SENSOR ADJUSTMENT**

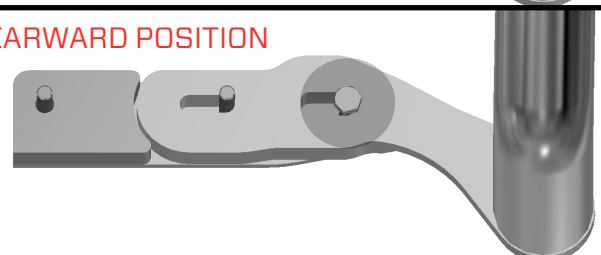
[START]

Later designs include slots allowing variation in where the bar is positioned. Adjusting the bar closer to the car (back position) and centred has resolved all the troublesome parking sensor false alarms we have encountered.

**FORWARD POSITION**



**REARWARD POSITION**



**1**

**Loosen Bar Assembly Bolts.**

1. Loosen the (2) M10 x 40mm Bolts (black) [H] holding the Nudge Bar Assembly [A] to the Mounting Plate (front) [C].
2. Do this for both sides, (passenger & driver).



PREVIOUS VERSION SHOWN



## 2

### Loosen Strengthening Bolts.

1. Loosen the strengthening bolt.
2. Do this for both sides, (passenger & driver).



## 3

### Loosen Mounting Bracket Bolts.

1. Loosen the (2) rear bolts attaching the mounting brackets to the chassis.
2. Do this for both sides, (passenger & driver).



## 4

### Align Nudge Bar Assembly.

1. Move the Nudge Bar side-to-side to ensure it is not interfering with the front parking sensors.

#### NOTE

The parking sensors are very sensitive and if the bar is off-centre by even a few mms, it can cause the sensors to pick up the bar. If you're having trouble, be sure the mounting plates are installed correctly, (they should line up evenly along the back and sides).



#### NOTES

On 2011, 2012 & 2016+ models, be sure to push the entire assembly (mounting arms and bar) all the way back towards the vehicle. It may only move back 1-2mm but this will help avoid issues with the parking sensor system.

Most vehicles shouldn't need it, but individual parking sensors can be disabled (2011 - 2015 models only) if they continue to be triggered by the nudge bar. To disable an individual parking sensor, place a 1mm clear vinyl sticker over the sensor. This doesn't work for 2016+ models.

#### NOTE

If required, please contact us at ([support@chiefproducts.com.au](mailto:support@chiefproducts.com.au)) and we will send you the stickers.





## 5

### Tighten Mounting Bracket Bolts.

Being careful not to move the bar.

1. Tighten the (2) rear bolts attaching the mounting brackets to the chassis.
2. Do this for both sides, (passenger & driver).

#### NOTE

Recommended M10 Bolt Torque = 90Nm (Dry) or 74Nm (Anti-Seize)



## 6

### Tighten Strengthening Bolts.

Being careful not to move the bar.

1. Tighten the strengthening bolt.
2. Do this for both sides, (passenger & driver).

#### NOTE

Recommended M10 Bolt Torque = 90Nm (Dry) or 74Nm (Anti-Seize)



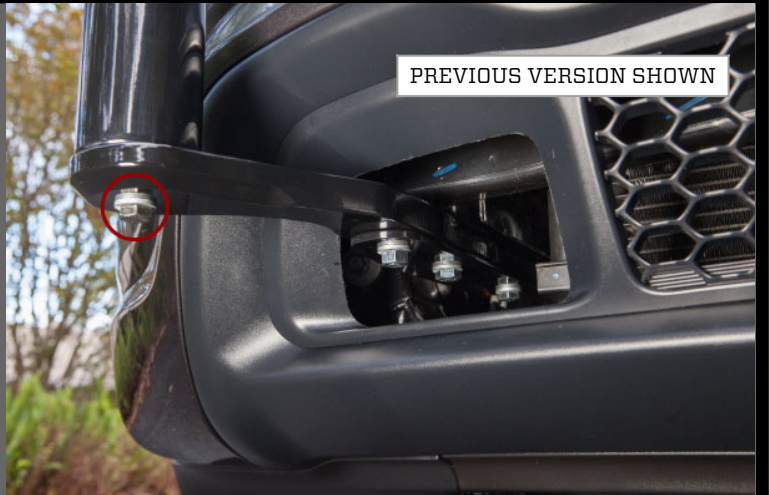
## 7

### Tighten Bar Assembly Bolts.

1. Tighten the (2) M10 x 40mm Bolts (black) [H] holding the Nudge Bar Assembly [A] to the Mounting Plate (front) [C].
2. Do this for both sides, (passenger & driver).

#### NOTE

Recommended M10 Bolt Torque = 90Nm (Dry) or 74Nm (Anti-Seize)



## PARKING SENSOR ADJUSTMENT

[END]

## LOWER FRONT FASCIA REMOVAL

[START]

**1**

### Remove 'Lower Front Fascia'

#### Remove Bar.

1. Remove the (2) M10 x 40mm Bolts (black) [H] holding the Nudge Bar Assembly [A] to the Mounting Plate (front) [C].
2. Set Nudge Bar Assembly aside in a safe place.



**2**

### Remove 'Lower Front Fascia'

#### Slide Mounting Arm Inward.

1. Remove the strengthening bolt from one side. Doing this on one side only will simplify the re-aligning of the Nudge Bar Assembly during re-installation.
2. Slide the Mounting Plate (front) inwards and remove the lower fascia.

#### NOTE

If you have a USA model and plan to remove the Lower Fascia regularly, install the strengthening bolt from the bottom up, (nut on top).  
Recommended M10 Bolt Torque = 90Nm (Dry) or 74Nm (Anti-Seize)



PREVIOUS VERSION SHOWN

### LOWER FRONT FASCIA - Removal & Installation

If you need help, you can download a PDF of the process here, ([www.chiefproducts.com.au/installation/wk2-lower-front-fascia-removal-and-installation.pdf](http://www.chiefproducts.com.au/installation/wk2-lower-front-fascia-removal-and-installation.pdf)).

## LOWER FRONT FASCIA REMOVAL

[END]



# MAINTENANCE

## FASTENERS

- Check fastener tightness regularly and tighten if required. We recommend checking fasteners after every large off-road trip.

## CORROSION PROTECTION

- After an off-road trip; rinse all mud, sand or debris off the product.
- After driving in salt water; rinse product thoroughly with fresh water.

## EXTRA CARE

- If you're planning to drive in a salty environment; spray fasteners with WD40 or an equivalent.
- If you're planning to drive in a salty environment; spray product with Lanolin or an equivalent.
- Spray deep scratches (before they rust) with touch up paint to help inhibit corrosion.

# SUPPORT

Find answers online.

[www.chiefproducts.com.au/pages/support](http://www.chiefproducts.com.au/pages/support)

**Having troubles? Make sure you've downloaded the most recent version of these instructions from our website. We occasionally make updates.**

[www.chiefproducts.com.au/installation/wk2-nudge-bar.pdf](http://www.chiefproducts.com.au/installation/wk2-nudge-bar.pdf)

**If you need additional help, send us an email.**

[support@chiefproducts.com.au](mailto:support@chiefproducts.com.au)

# SHARE

**Looking to share epic photos of your WK2?**

Send us your photos - Unboxing, Fully Installed, Painted-In-Mud or out Adventuring in some beautiful location. If you share with us, we'll share with our followers.

## UPLOAD

[www.chiefproducts.com.au/share](http://www.chiefproducts.com.au/share)

## EMAIL

[connect@chiefproducts.com.au](mailto:connect@chiefproducts.com.au)

## HASHTAG

#ChiefProducts #GrandAdventure