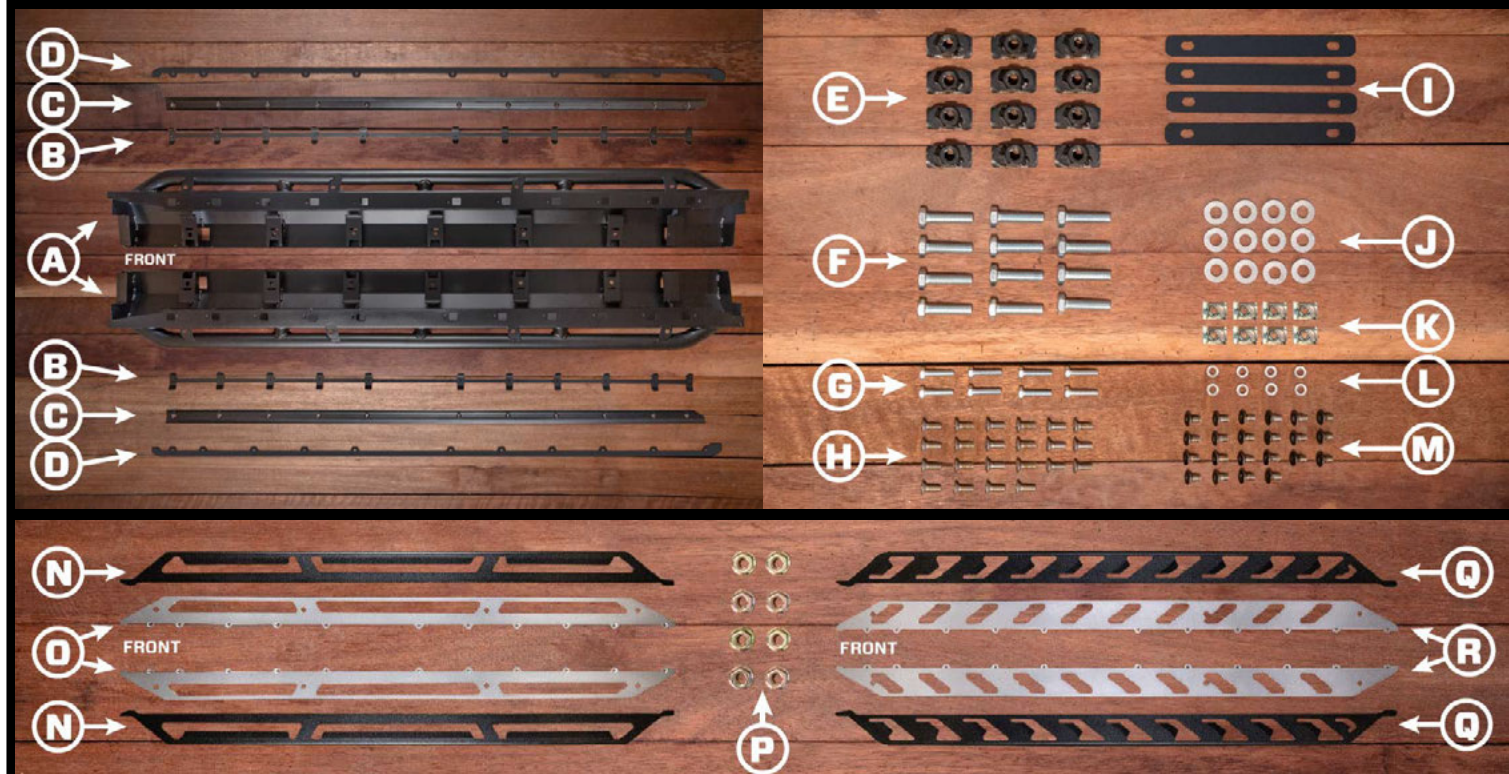


## WK2 Rock Rails

## Install Instructions



REF	QTY	DESCRIPTION	REF	QTY	DESCRIPTION
<b>A</b>	2	Rock Rail (Left + Right)	-	1	4g Anti-Seize Pouch
<b>B</b>	2	Clamping Rail (Left + Right)	-	1	Chief Products Shop Rag
<b>C</b>	2	Clamping Plate (Left + Right)			
<b>D</b>	2	Spacer Plate (Left + Right) <i>Bare Bones and No-Tread</i>			
<b>E</b>	12	Insert Nut			
<b>F</b>	12	M10 x 40mm 10.9 Bolts (Zinc)	<b>N</b>	2	Step Tread (Safari Three)
<b>G</b>	8	M6 x 25mm 10.9 Bolts (Zinc)	<b>O</b>	2	Tread Pattern (Safari Three)
<b>H</b>	22	M6 x 16mm 8.8 Countersunk Hex Screw (Zinc)	<b>P</b>	8	Flanged Nut
<b>I</b>	4	Lower Fastening Plate			
<b>J</b>	12	M10 Wedge-Lock Extended Washer			
<b>K</b>	8	M6 U-Nut (Zinc)	<b>Q</b>	2	Step Tread (Trek Eleven)
<b>L</b>	8	M6 Wedge-Lock Extended Washer	<b>R</b>	2	Tread Pattern (Trek Eleven)
<b>M</b>	22	M6 x 10mm 8.8 Countersunk Hex Screw (Black Zinc)	<b>P</b>	8	Flanged Nut

### REQUIRED TOOLS

16mm Socket	16mm Wrench
13mm Socket	Punch Tool
10mm Socket	Hammer
Ratchet	Plastic Trim Tool
Ratchet Extension	Hex Key H4

### NOTES

- Do not over-tighten fasteners.
- Photos are representative only. They may show prototype parts and be taken from multiple vehicles.

### IMPORTANT

- PROPER INSTALLATION IS ESSENTIAL TO THE PERFORMANCE OF THIS PRODUCT.
- ONLY INSTALL THIS PRODUCT ON A 2011-2021 JEEP GRAND CHEROKEE.
- ONLY USE THE PROVIDED HARDWARE FOR INSTALLATION.
- DO NOT MODIFY THE STRUCTURE OF THIS PRODUCT IN ANY WAY.
- CHECK PRODUCT REGULARLY FOR DAMAGE. REPLACE IMMEDIATELY AT FIRST SIGN OF DAMAGE.
- CHECK FASTENER TIGHTNESS REGULARLY AND TIGHTEN IF REQUIRED.

Begin Rocker Panel Removal

## WK2 Rock Rails

## Install Instructions

### 1

#### Remove Plastic Clips.

1. Using a punch tool remove (5) OEM plastic clips.
2. Remove factory OEM fasteners at each end of the rocker panel (inside each wheel arch).



### 2

#### Unclip Rocker Panel.

1. Using a plastic trim tool unclip rocker panel from the body.



#### NOTE

This part is no longer required.

### 3

#### Remove OEM rubber plugs.

1. Remove (6) rubber plugs.



#### NOTE

On newer models these could be adhesive stickers.



## WK2 Rock Rails

## Install Instructions

### 4

#### Modify Body Tab.

1. Using a hammer, bend the tab up located in front of the rear tyre.



## Begin Installation

### 5

#### Install Insert Nuts.

1. Using (1) Insert Nut [E] push into the oval shaped hole in the rocker panel nut first. Quarter turn Insert Nut so the rocker panel is sandwiched between the thick and thin metal tabs of the Insert Nut. Centre Insert Nut [E] in hole.

*If insert nut is difficult to turn, thread M10 x 40mm Bolt [F] into insert nut and use a 16mm spanner to turn the insert nut into position [see 3rd image]. Remove Bolt when insert nut is in position.*



### 6

#### Install M6 U-Nuts.

1. Clip (4) M6 U-Nuts [K] onto (1) Rock Rail [A] (see inset photo). Align with holes (Red Circles).



## WK2 Rock Rails

## Install Instructions

### 7

#### Install Rock Rail.

1. Prepare (6) Bolt & Washer Combos, by placing (1) M10 Wedge-Lock Washer [J] on (1) M10 40mm bolt [F].
2. With doors open, place (1) Rock Rail [A] against body.
3. Using (6) Bolt & Washer combos, loosely fasten the Rock Rail [A] to the Insert Nuts [E]. Leave very loose (half thread) for easier fitment during Step 10 & 11.

#### NOTE

You can use a flat head screw driver to hang the Rock Rails while fastening the hardware. You'll find a body alignment hole on the vehicle body side (see image insert).



### 8

#### Wheel-Well Liner Placement.

1. Tuck the front wheel-well liner between the Rock Rail [A] and body.
2. Do this again for the rear wheel-well liner.



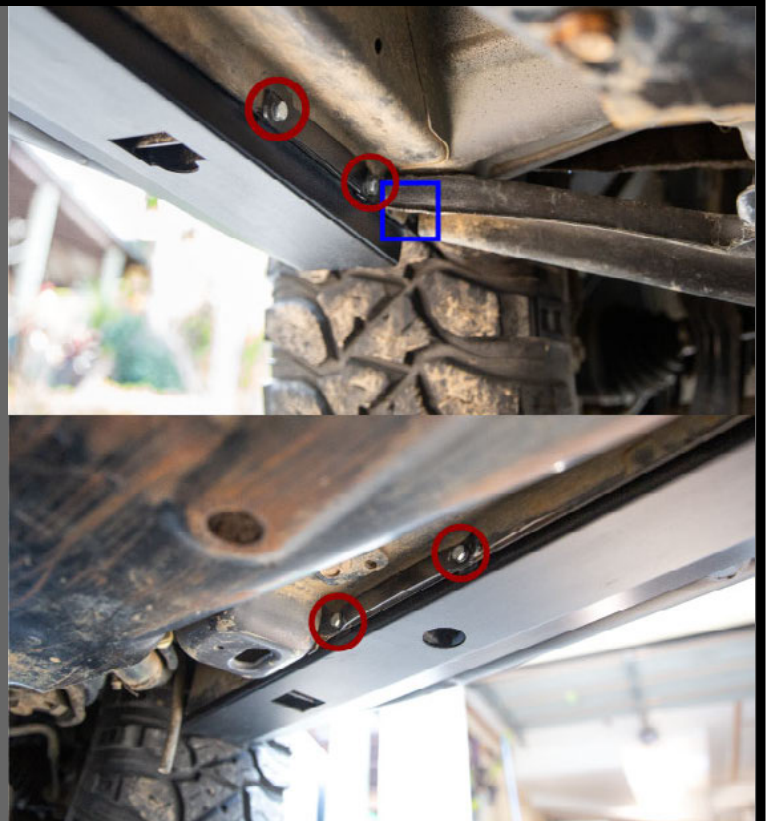
### 9

#### Install Lower Fastening Plates.

1. Prepare (4) Bolt & Washer Combos, by placing (1) M6 Wedge-Lock Washer [L] on (1) M6 25mm Bolt [G].
2. Starting behind the front tyre, place (1) Lower Fastening Plate [I] against the body.
3. Pass (2) M6 Bolt & Washer Combos through Lower Fastening Plate [I], through the body seam, and into the U-Nuts [K] on Rock Rail [A]. Leave very loose (half thread) for easier fitment during Step 10 & 11.
4. Install (1) Lower Fastening Plate [I] in front of the rear tyre, using the steps above (bottom photo).

#### NOTE

To install the forward most M6 bolt, you may need to bend the body reinforcement bracket out of the way slightly (Blue Square).





## WK2 Rock Rails

## Install Instructions

### 10

#### Install Clamping Rail.

1. With the doors still open, slide tabs of Clamping Rail [B] through the Rock Rails [A] and into the body.
2. Ensure the tabs are all the way up into the body of the vehicle.



#### IF YOU HAVE:

- Bare Bones or No-Tread Editions (*GO TO STEP 11*).
- Trek Eleven or Safari Three Tread Plates (*Go To Step 12*).

### 11 Bare Bones or No Tread Editions

#### Install Spacer Plate.

1. Place Spacer Plate [D] on top of Rock Rail [A] so that Clamping Rail [B] tabs are held down into Rock Rail.
2. Using (11) M6 x 16mm Hex Screws [H] fasten Spacer Plate [D] to Rock Rail [A]. Install all of the bolts loosely. Then tighten evenly.
3. Ensure Spacer Plate [D] is flush with Rock Rail [A].

*Skip to Step 14.*

#### NOTE

Recommended M6 Bolt Torque = 14Nm (Dry) or 11Nm (Anti-Seize)



### 12 Trek Eleven or Safari Three Tread Plates

#### Install Tread Pattern.

1. Place Tread Pattern [O/R] on top of Rock Rail [A] so that Clamping Rail [B] tabs are held down into Rock Rail.
2. Using (11) M6 x 16mm Hex Screws [H] fasten Tread Pattern [O/R] to Rock Rail [A]. Install all of the bolts loosely. Then tighten evenly.
3. Ensure Spacer Plate [D] is flush with Rock Rail [A].

*Spacer Plate [D] is not required with Tread Plates.*

#### NOTE

Recommended M6 Bolt Torque = 14Nm (Dry) or 11Nm (Anti-Seize)



## WK2 Rock Rails

## Install Instructions

### 13 Trek Eleven or Safari Three Tread Plates

#### Install Step Tread

1. Close both doors.
2. Lay Step Tread [N/Q] onto Tread Pattern [O/R] and Rock Rail [A]. Ensure studs on the back of Step Tread [N/Q] pass through the holes in Tread Pattern [O/R] and Rock Rail [A].
3. Using (4) Flanged Nuts [P] fasten Step Tread [N/Q] to Rock Rails [A]. Tighten until snug. Do not over-tighten.

#### NOTE

Recommended M8 Bolt Torque = 8Nm (Dry) or 6Nm (Anti-Seize)



### 14

#### Install Clamping Plate

1. Opening up the doors again, place (1) Clamping Plate [C] against Clamping Rail [B].
2. Using (11) M6 x 10mm Hex Screws [M] fasten Clamping Plate [C] to Clamping Rail [B]. Install all of the bolts loosely. Then tighten evenly.

#### NOTE

Recommended M6 Bolt Torque = 14Nm (Dry) or 11Nm (Anti-Seize)



### 15

#### Tighten M6 fasteners.

1. Tighten front M6 Lower Fastening Plate Bolts.
2. Tighten rear M6 Lower Fastening Plate Bolts.

#### NOTE

Recommended M6 Bolt Torque = 20Nm (Dry) or 16Nm (Anti-Seize)





## WK2 Rock Rails

## Install Instructions

# 16

### Tighten M10 fasteners.

1. Tighten (6) M10 fasteners.

#### NOTE

Recommended M10 Bolt Torque = 90Nm (Dry) or 74Nm (Anti-Seize)



Repeat Steps 1 - 16 for the other side.

WK2 Rock Rails are now fully installed.

## MAINTENANCE

### FASTENERS

- Check fastener tightness regularly and tighten if required. We recommend checking fasteners after every large off-road trip.

### CORROSION PROTECTION

- After an off-road trip; rinse all mud, sand or debris off the product.
- After driving in salt water; rinse product thoroughly with fresh water.

### EXTRA CARE

- If you're planning to drive in a salty environment; spray fasteners with WD40 or an equivalent.
- If you're planning to drive in a salty environment; spray product with Lanolin or an equivalent.
- Spray deep scratches (before they rust) with touch up paint to help inhibit corrosion.



## WK2 Rock Rails

## Install Instructions

# SUPPORT

**Find answers online.**

[www.chiefproducts.com.au/pages/support](http://www.chiefproducts.com.au/pages/support)

**Having troubles? Make sure you've downloaded the most recent version of these instructions from our website. We occasionally make updates.**

[www.chiefproducts.com.au/installation/wk2-rock-rails.pdf](http://www.chiefproducts.com.au/installation/wk2-rock-rails.pdf)

**If you need additional help, send us an email.**

[support@chiefproducts.com.au](mailto:support@chiefproducts.com.au)

# SHARE

**Looking to share epic photos of your WK2?**

Send us your photos - Unboxing, Fully Installed, Painted-In-Mud or out Adventuring in some beautiful location. If you share with us, we'll share with our followers.

**UPLOAD**

[www.chiefproducts.com.au/share](http://www.chiefproducts.com.au/share)

**EMAIL**

[connect@chiefproducts.com.au](mailto:connect@chiefproducts.com.au)

**HASHTAG**

*#ChiefProducts #GrandAdventure*